

CABLE TROLLEYS

Range of options



6 mm steel wire:

Trolleys for round cable
Cable load 3 kg
Cable load 6 kg

Trolleys for flat cable
Cable load 6 kg



C-rails:

Trolleys for round cable
C-30 rail, Cable load 20 kg
C-40 rail, Cable load 32 kg

Trolleys for flat cable
C-30 rail, Cable load 20 kg
C-40 rail, Cable load 32 kg
Trolleys for tool suspension available for booth C-30 & C-40 rails



I-Beam:

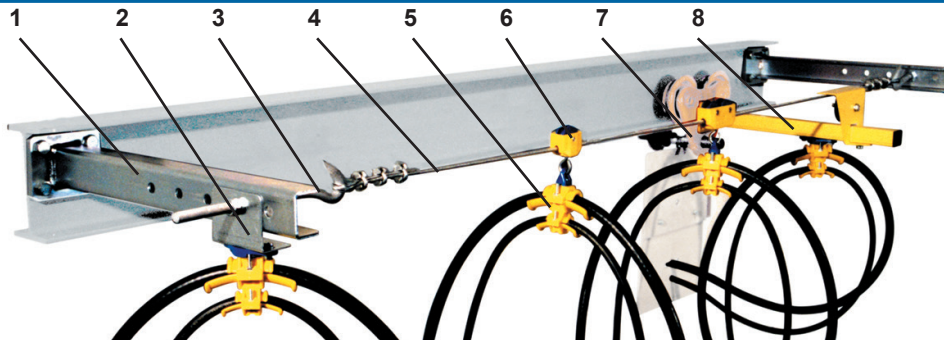
Trolleys for round cable
Cable load 10 kg
Cable load 20 kg

Trolleys for flat cable
Cable load 10 kg
Cable load 20 kg

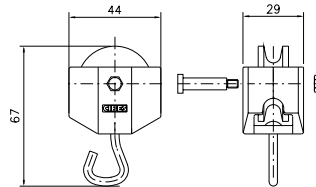
CABLE TROLLEYS for 6 mm. steel wire Roundcable



Sheet 11-10 2016



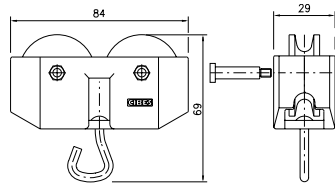
1. Tension bracket
2. Fixed plate cableclamp
3. Tension screw
4. Steel wire 6 mm.
5. Cableclamp, adjustable
6. Cable trolley, one wheel
7. Cable trolley, two wheels
8. Towing trolley



Cable trolley with 1 wheel for round cable

Material: Polyamide wheel
Polyamide body
Steel axle

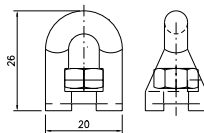
Cable load, kg: 3
Weight, kg: 0,035
Article No.: 11 135



Cable trolley with 2 wheels for round cable

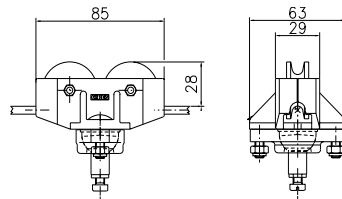
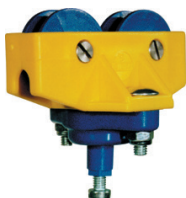
Material: Polyamide wheel
Polyamide body
Steel axle

Cable load, kg: 6
Weight, kg: 0,06
Article No.: 11 235



Connecting eye for cable clamp 11 050-052

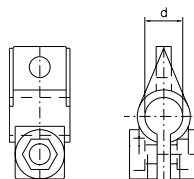
Material: Polyamide
Weight, kg: 0,010
Article No.: 11 055



Cable trolley with 2 wheels and ball joint

Material: Polyamide wheel & ball joint
Polyamide body
Steel axle

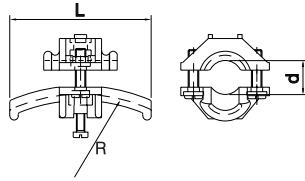
Cable load, kg: 6
Weight, kg: 0,10
Article No.: 11 234



Cable collars

Material: Polyamide
Weight, kg: 0,008 - 0,014
Article No. Ø mm.

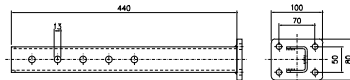
11 010	10	11 016	16
11 011	11	11 018	18
11 012	12,5	11 020	20
11 014	14	11 022	22



Adjustable clamps for cable or hose

Material: Polyamide

Diam., mm:	10 - 16	17 - 25	26 - 36
Radius, mm:	80	125	160
Length, mm:	70	100	140
Weight, kg:	0,04	0,06	0,12
Article No.:	11 050	11 051	11 052

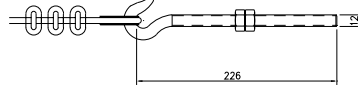


Tension bracket

Material: Galvanized steel

Weight, kg: 2,1

Article No.: 11 720

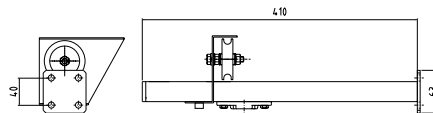


Tension screw

Material: Galvanized steel

Weight, kg: 0,25

Article No.: 11 735



Towing trolley

Material: Powder coated body and arm

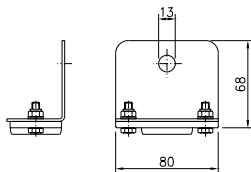
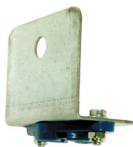
Polyamide wheel

Polyamide affixing plate

Steel axle

Weight, kg: 1,18

Article No.: 11 707

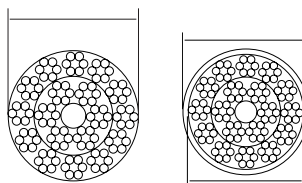
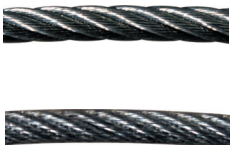


Mounting plate for end clamp

Material: Galvanized steel/Polyamide

Weight, kg: 0,17

Article No.: 11 731



Steel wire (galvanized)

Material: Wire PVC-covered wire

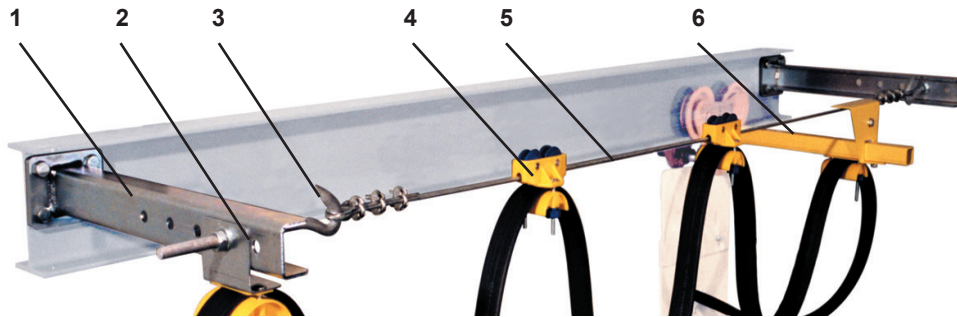
Weight, kg: 0,12 0,10

Article No.: 11 740 11 741

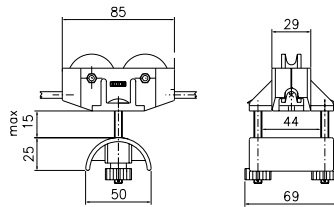
CABLE TROLLEYS for 6 mm. steel wire flat cable



Sheet 11-12 2016



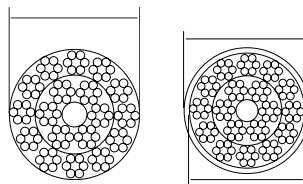
1. Tension bracket
2. Fixed plate cableclamp
3. Tension screw
4. Cable trolley with 2 wheels for flat cable
5. Steel wire, 6 mm.
6. Towing trolley



Cable trolley with 2 wheels for flat cable

Material: Polyamide wheels and clamp
Polyamide body
Steel axles

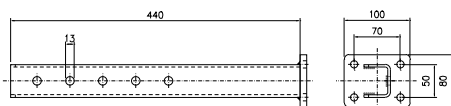
Cable load, kg: 6
Weight, kg: 0,10
Article No.: 11 236



Steel wire (galvanized)

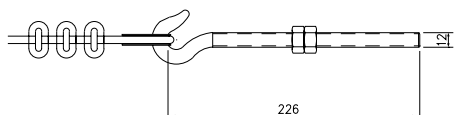
Material: Wire PVC-covered wire

Weight, kg: 0,12 0,10
Article No.: 11 740 11 741



Tension bracket

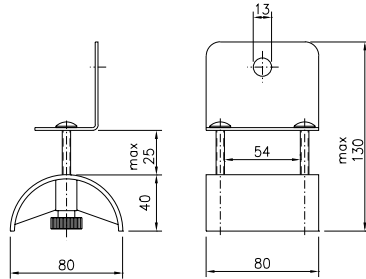
Material: Galvanized steel
Weight, kg: 2,1
Article No.: 11 720



Tension screw

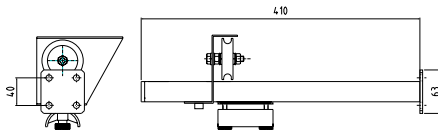
Material: Galvanized steel
Weight, kg: 0,25
Article No.: 11 735





Mounting plate for end clamp

Material: Galvanized steel/Polyamide
Weight, kg: 0,22
Article No.: 11 733



Towing trolley

Material: Powder coated body and arm
Polyamide wheel
Polyamide affixing plate
Steel axle
Weight, kg: 1,22
Article No.: 11 708



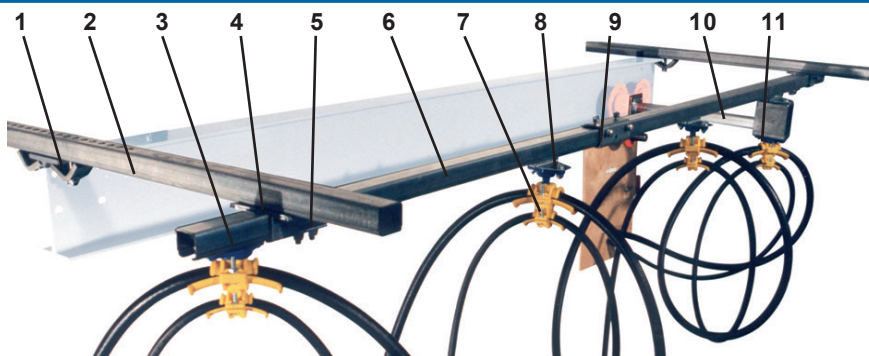
CABLE TROLLEYS IN PLASTIC

for C-rail 30x32 mm

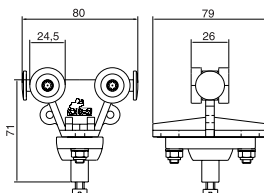
Roundcable



Sheet 11-20 2016



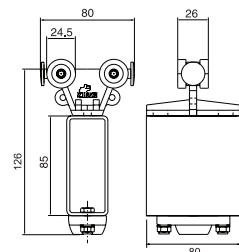
1. Girder clips
2. Support arm
3. End clamp
4. Support bracket
5. End stop
6. C-rail
7. Cable clamp
8. Cable trolley
9. Track coupler
10. Towing arm
11. Towing trolley



Cable trolley

Material: Polyamide body and ball joint
Steel axles

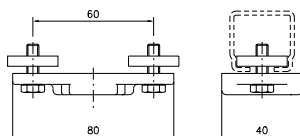
Wheel:	Polyamide	Galvanized steel
Cable load, kg:	6	15
Weight, kg:	0,10	0,16
Article No.:	11 305	11 306



Towing trolley

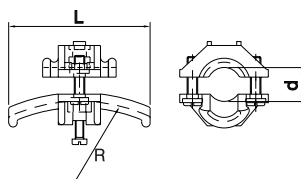
Material: Polyamide body
Steel axles
PVC towing box

Wheel:	Polyamide	Galvanized steel
Cable load, kg:	6	15
Weight, kg:	0,15	0,21
Article No.:	11 760	11 761



Affixing plate for cable clamp

Material: Polyamide, Galvanized steel
Weight, kg: 0,09
Article No.: 11 779

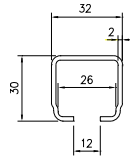


Adjustable clamps for cable or hose

Material: Polyamide

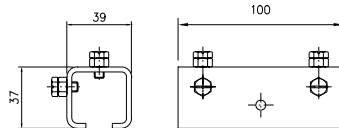
Diam., mm:	10 - 16	17 - 25	26 - 36
Radius, mm:	80	125	160
Length, mm:	70	100	140
Weight, kg:	0,04	0,06	0,12
Article No.:	11 050	11 051	11 052





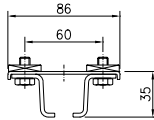
C-rail

Material: Galvanized steel
 Length, mm: 4000 6000
 Weight, kg: 6,2 9,3
 Article No.: 11 900 11 801



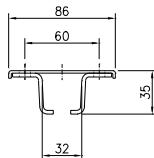
Track coupler

Material: Galvanized steel
 Weight, kg: 0,28
 Best. nr: 11 810



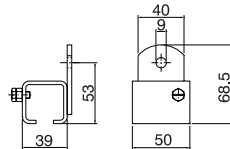
Support bracket with square nuts

Material: Galvanized steel
 Weight, kg: 0,24
 Article No.: 11 820



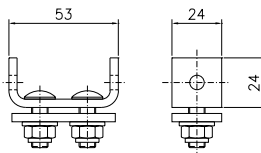
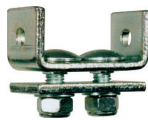
Support bracket for ceiling mounting

Material: Galvanized steel
 Weight, kg: 0,16
 Article No.: 11 825



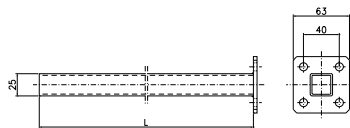
Support bracket for wall mounting

Material: Galvanized steel
 Weight, kg: 0,20
 Article No.: 11 830



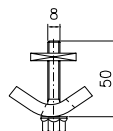
End stop

Material: Galvanized steel
 Weight, kg: 0,13
 Article No.: 11 841



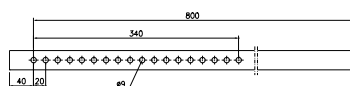
Towing arm

Material: Galvanized steel
 Length, mm: 400 630
 Weight, kg: 0,6 0,8
 Article No.: 11 701 11 702



Girder clips (2 for each support arm)

Material: Galvanized steel
 Weight, kg: 0,15
 Article No.: 11 737



Support arm

Material: Galvanized steel
 Length, mm: 800
 Weight, kg: 1,25
 Article No.: 11 723



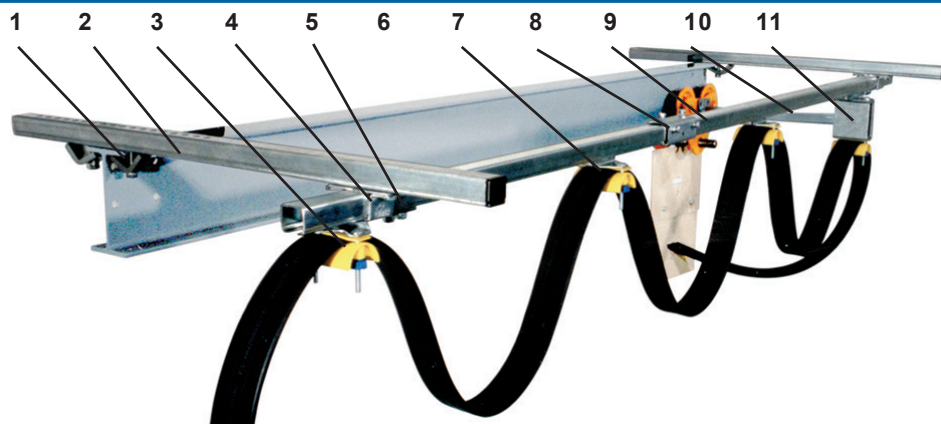
CABLE TROLLEYS IN PLASTIC

for C-rail 30x32 mm

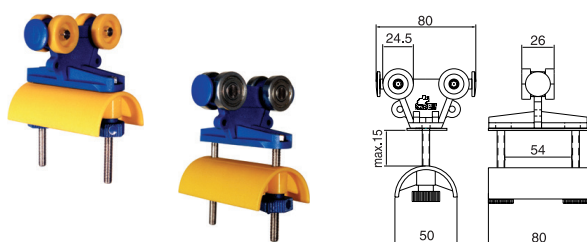
Flat cable



Sheet 11-25 2016



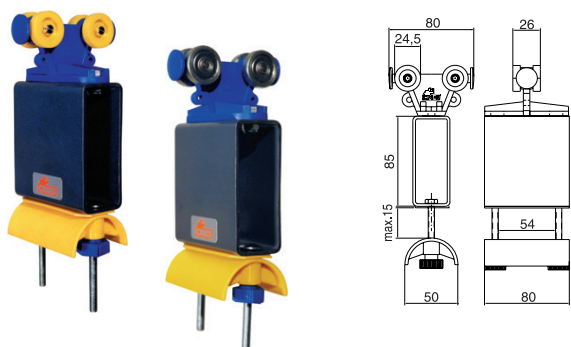
1. Girder clips
2. Support arm
3. End clamp
4. Support bracket
5. End stop
6. Cable trolley
7. Track coupler
8. C-rail
9. Towing arm
10. Towing trolley



Cable trolley for flat cable

Material: Polyamide body and clamp
Steel axle

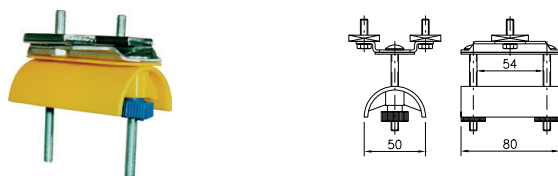
	Polyamide	Galvanized steel
Wheel:		
Cable load, kg:	6	15
Weight, kg:	0,11	0,17
Article No.:	11 310	11 309



Towing trolley for flat cable

Material: Polyamide body and clamp
Steel axle
PVC towing box

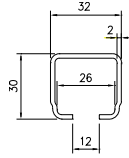
	Polyamide	Galvanized steel
Wheel:		
Cable load, kg:	6	15
Weight, kg:	0,16	0,22
Article No.:	11 765	11 766



End clamp

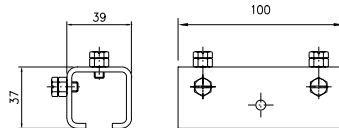
Material: Polyamide, Galvanized steel
Weight, kg: 0,2
Article No.: 11 780





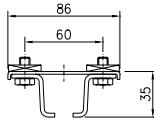
C-rail

Material: Galvanized steel
 Length, mm: 4000 6000
 Weight, kg: 6,2 9,3
 Article No.: 11 900 11 801



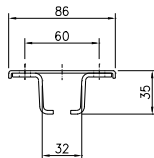
Track coupler

Material: Galvanized steel
 Weight, kg: 0,28
 Article No.: 11 810



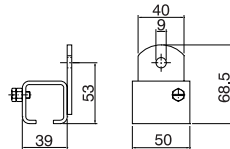
Support bracket with square nuts

Material: Galvanized steel
 Weight, kg: 0,24
 Article No.: 11 820



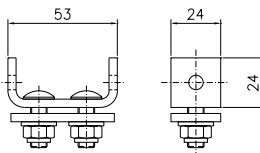
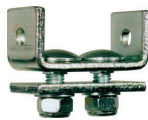
Support bracket for ceiling mounting

Material: Galvanized steel
 Weight, kg: 0,16
 Article No.: 11 825



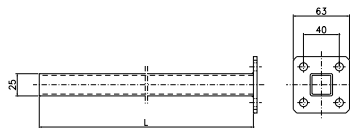
Support bracket for wall mounting

Material: Galvanized steel
 Weight, kg: 0,20
 Article No.: 11 830



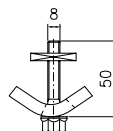
End stop

Material: Galvanized steel
 Weight, kg: 0,13
 Article No.: 11 841



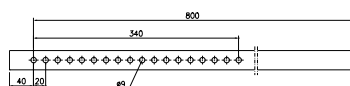
Towing arm

Material: Galvanized steel
 Length, mm: 400 630
 Weight, kg: 0,6 0,8
 Article No.: 11 701 11 702



Girder clips (2 st per Support arm)

Material: Galvanized steel
 Weight, kg: 0,15
 Article No.: 11 737



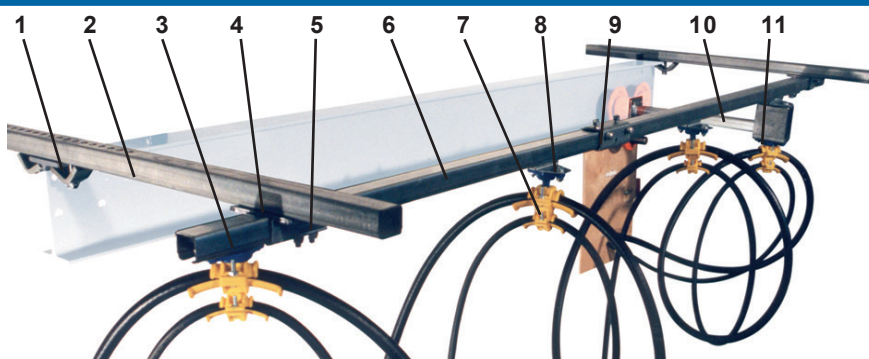
Support arm

Material: Galvanized steel
 Length, mm: 800
 Weight, kg: 1,25
 Article No.: 11 723

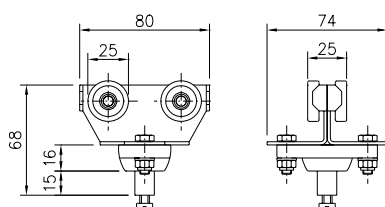
CABLE TROLLEYS för C-rail 30x32 mm Roundcable



Sheet 11-30 2016



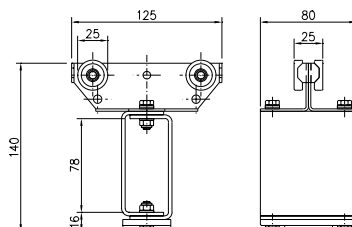
1. Girder clips
2. Support arm
3. End clamp
4. Support bracket
5. End stop
6. C-rail
7. Cable clamp
8. Cable trolley
9. Track coupler
10. Towing arm
11. Towing trolley



Cable trolley with 4 wheels for round cable

Material: Galvanized steel body
Wheel with dustproof bearings
Polyamide ball joint

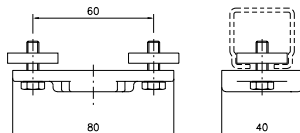
Cable load, kg: 20
Weight, kg: 0,26
Article No.: 11 301



Towing trolley

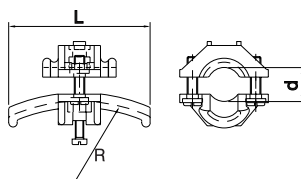
Material: Galvanized steel body and towing box
Wheel with dustproof bearings
Polyamide affixing plate

Cable load, kg: 20
Weight, kg: 0,57
Article No.: 11 756



End clamp

Material: Polyamide, Galvanized steel
Weight, kg: 0,09
Article No.: 11 779

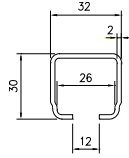


Adjustable clamps for cable or hose

Material: Polyamide

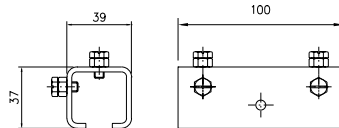
Diam., mm:	10 - 16	17 - 25	26 - 36
Radius, mm:	80	125	160
Length, mm:	70	100	140
Weight, kg:	0,04	0,06	0,12
Article No.:	11 050	11 051	11 052





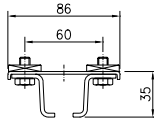
C-rail

Material: Galvanized steel
 Length, mm: 4000 6000
 Weight, kg: 6,2 9,3
 Article No.: 11 900 11 801



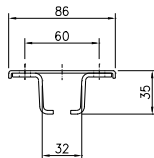
Track coupler

Material: Galvanized steel
 Weight, kg: 0,28
 Best. nr: 11 810



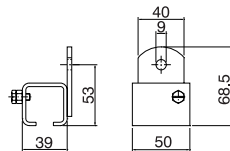
Support bracket with square nuts

Material: Galvanized steel
 Weight, kg: 0,24
 Article No.: 11 820



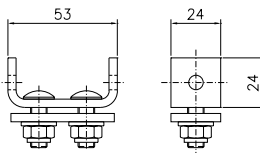
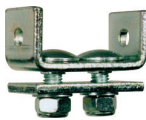
Support bracket for ceiling mounting

Material: Galvanized steel
 Weight, kg: 0,16
 Article No.: 11 825



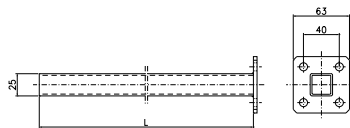
Support bracket for wall mounting

Material: Galvanized steel
 Weight, kg: 0,20
 Article No.: 11 830



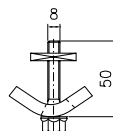
End stop

Material: Galvanized steel
 Weight, kg: 0,13
 Article No.: 11 841



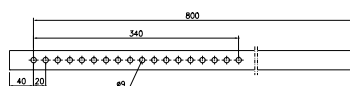
Towing arm

Material: Galvanized steel
 Length, mm: 400 630
 Weight, kg: 0,6 0,8
 Article No.: 11 701 11 702



Girder clips (2 for each Support arm)

Material: Galvanized steel
 Weight, kg: 0,15
 Article No.: 11 737



Support arm

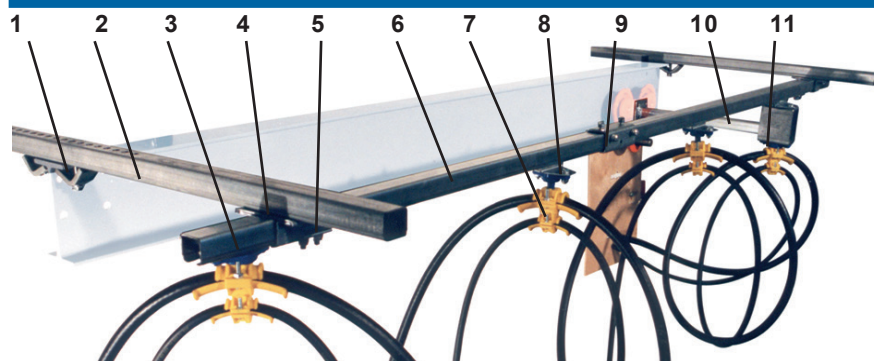
Material: Galvanized steel
 Length, mm: 800
 Weight, kg: 1,25
 Article No.: 11 723

CABLE TROLLEYS

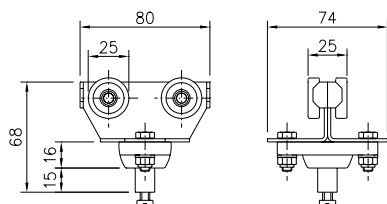
Acid proof, Stainless steel for C-rail, 30x32 mm. Round cable



Sheet 11-30S 2016



1. Girder clips
2. Support arm
3. End clamp
4. Support bracket
5. End stop
6. C-rail
7. Cable clamp
8. Cable trolley
9. Track coupler
10. Towing arm
11. Towing trolley



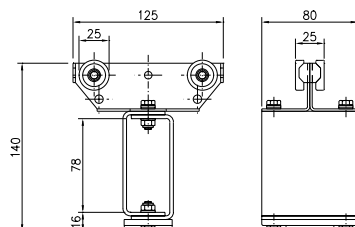
Cable trolley with 4 wheels for round cable

Material: Acid proof steel SS 2343 (body)
Stainless & dustproof bearings
polyamide (ball joint)
Acid proof steel A4 (nuts & bolts)

Cable load, kg: 20

Weight, kg: 0,26

Article no.: 11 653



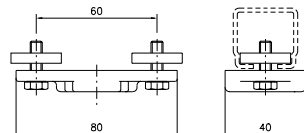
Towing trolley

Material: Acid proof steel SS 2343 (body)
Stainless & dustproof bearings
polyamide (affixing plate)
Acid proof steel A4 (nuts & bolts)

Cable load, kg: 20

Weight, kg: 0,57

Article no.: 11 654

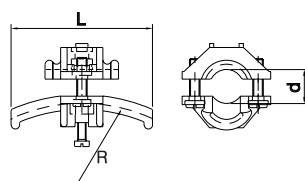


Affixing plate for cable clamp

Material: Polyamide
Acid proof steel A4 (nuts & bolts)

Weight, kg: 0,09

Article no.: 11 655



Adjustable clamp for cable or hose

Material: Polyamide
Acid proof steel A4 (nuts & bolts)

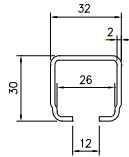
Diam., mm: 10 - 16 17 - 25 26 - 36

Radius, mm: 80 125 160

Length, mm: 70 100 140

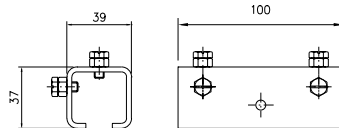
Weight, kg: 0,04 0,06 0,12

Article no.: 11 650 11 651 11 652



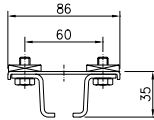
C-rail

Material: Acid proof steel SS 2343
 Length, mm: 4000 6000
 Weight, kg: 6,2 9,3
 Article no.: **11 899** **11 799**



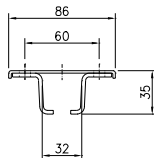
Track coupler

Material: Acid proof steel SS 2343
 Weight, kg: 0,28
 Article no.: **11 809**



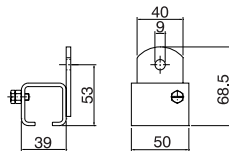
Support bracket with square nuts

Material: Acid proof steel SS 2343
 Weight, kg: 0,24
 Article no.: **11 819**



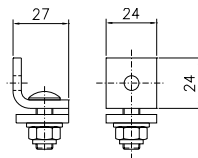
Support bracket for ceiling mounting

Material: Acid proof steel SS 2343
 Weight, kg: 0,16
 Article no.: **11 826**



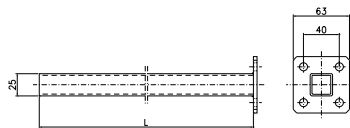
Support bracket for wall mounting

Material: Acid proof steel SS 2343
 Weight, kg: 0,20
 Article no.: **11 836**



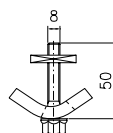
End stop

Material: Acid proof steel SS 2343
 Weight, kg: 0,13
 Article no.: **11 840**



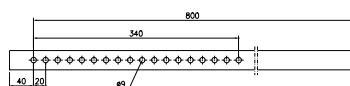
Towing arm

Material: Acid proof steel SS 2343
 Length, mm: 400
 Weight, kg: 0,6
 Article no.: **11 706**



Girder clips 2 for each support arm

Material: Acid proof steel SS 2343
 Weight, kg: 0,15
 Article no.: **11 738**



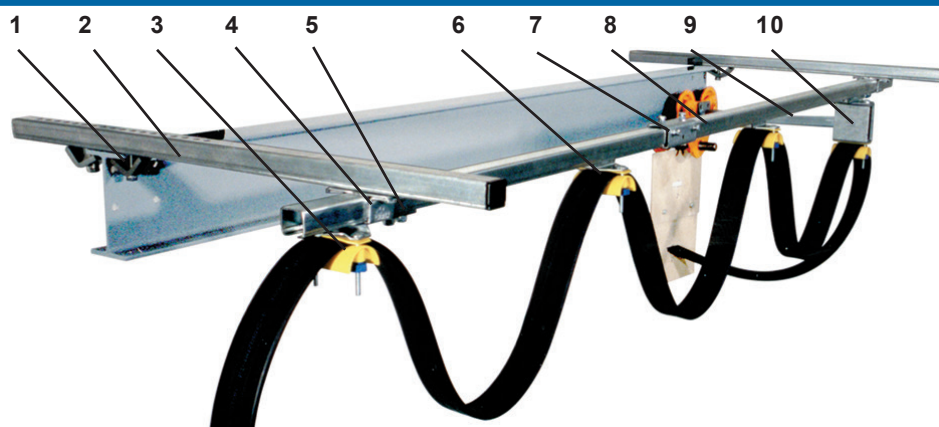
Support arm

Material: Acid proof steel SS 2343
 Length, mm: 800
 Weight, kg: 1,25
 Article no.: **11 722**

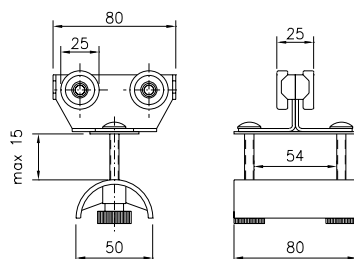
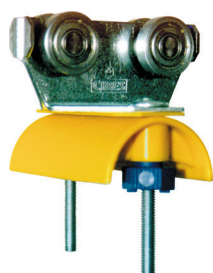
CABLE TROLLEYS for C-rail 30x32 mm Flatcable



Sheet 11-32 2016



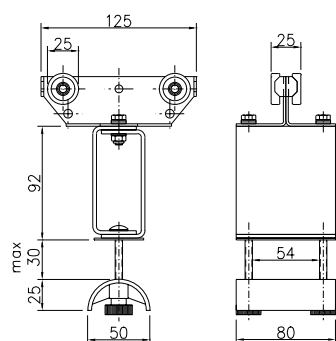
1. Girder clips
2. Support arm
3. End clamp
4. Support bracket
5. End stop
6. Cable trolley
7. Track coupler
8. C-rail
9. Towing arm
10. Towing trolley



Cable trolley with 4 wheels for flat cable

Material: Galvanized steel body
Wheel with dustproof bearings
Polyamide Cable clamp

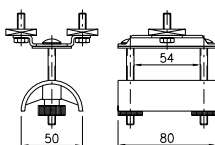
Cable load, kg: 20
Weight, kg: 0,28
Article No.: 11 312



Towing trolley

Material: Galvanized steel body and towing box
Wheel with dustproof bearings
Polyamide Cable clamp

Cable load, kg: 20
Weight, kg: 0,6
Article No.: 11 767

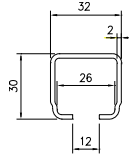


End clamp

Material: Polyamide, Galvanized steel

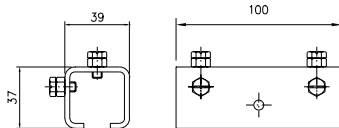
Weight, kg: 0,2
Article No.: 11 780





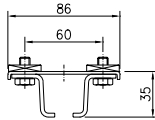
C-rail

Material: Galvanized steel
 Length, mm: 4000 6000
 Weight, kg: 6,2 9,3
 Article No.: 11 900 11 801



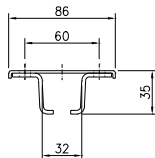
Track coupler

Material: Galvanized steel
 Weight, kg: 0,28
 Article No.: 11 810



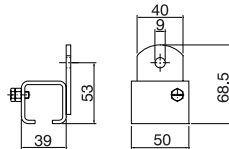
Support bracket with square nuts

Material: Galvanized steel
 Weight, kg: 0,24
 Article No.: 11 820



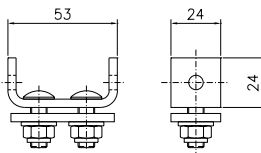
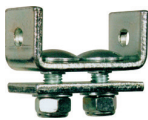
Support bracket for ceiling mounting

Material: Galvanized steel
 Weight, kg: 0,16
 Article No.: 11 825



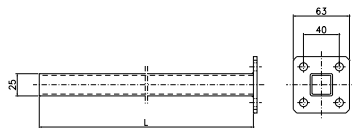
Support bracket for wall mounting

Material: Galvanized steel
 Weight, kg: 0,20
 Article No.: 11 830



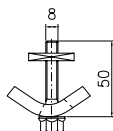
End stop

Material: Galvanized steel
 Weight, kg: 0,13
 Article No.: 11 841



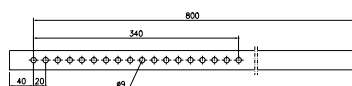
Towing arm

Material: Galvanized steel
 Length, mm: 400 630
 Weight, kg: 0,6 0,8
 Article No.: 11 701 11 702



Girder clips 2 for each support arm

Material: Galvanized steel
 Weight, kg: 0,15
 Article No.: 11 737



Support arm

Material: Galvanized steel
 Length, mm: 800
 Weight, kg: 1,25
 Article No.: 11 723

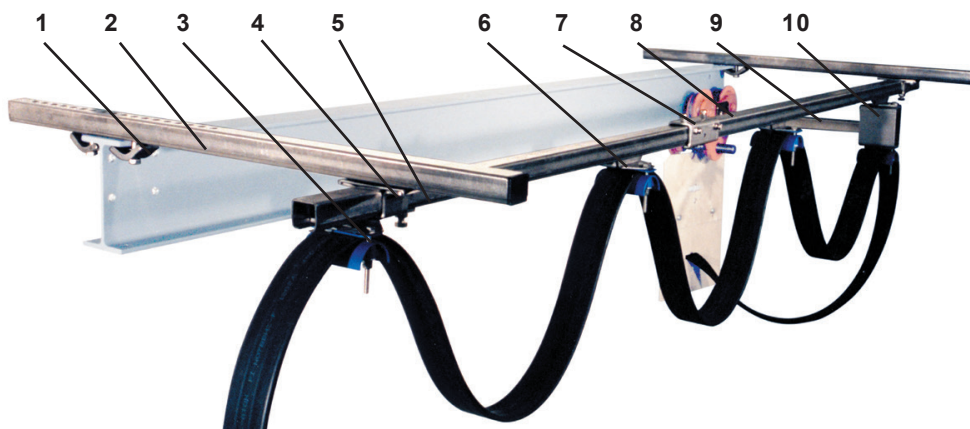


CABLE TROLLEYS

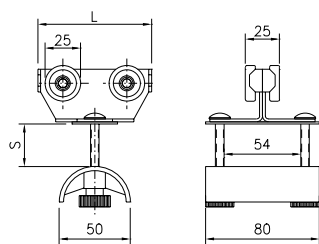
Acid proof, Stainless steel for C-rail, 30x32 mm. Flat cable



Sheet 11-32S 2011



1. Girder clips
2. Support arm
3. End clamp
4. Support bracket
5. End stop
6. Cable trolley
7. Track coupler
8. C-rail
9. Towing arm
10. Towing trolley

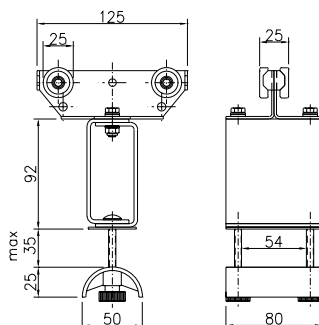


Cable trolley flatcable

Material: Acid proof steel SS 2343 (body)
Stainless & dust-proof bearings
Polyamide (cable clamp)
Acid proof steel A4 (Nuts & bolts)

Cable load, kg: 20
Weight, kg: 0,28 0,36
L, mm: 80 125
S, mm: 15 35

Article No.: 11 311 11 315

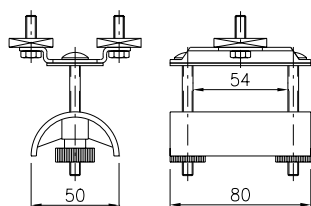
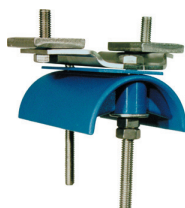


Towing trolley flatcable

Material: Acid proof steel SS 2343 (body)
Stainless & dust-proof bearings
Polyamide (cable clamp)
Acid proof steel A4 (Nuts & bolts)

Cable load, kg: 20
Weight, kg: 0,6

Article No.: 11 769



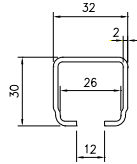
End clamp flatcable

Material: Acid proof steel SS 2343 (body)
Polyamide (cable clamp)
Acid proof steel A4 (Nuts & bolts)

Weight, kg: 0,2

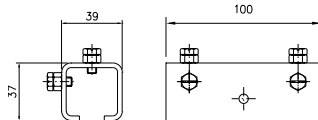
Article No.: 11 782





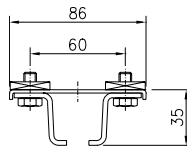
C-rail

Material: Acid proof steel SS2343
Length, mm: 4000 6000
Weight, kg: 6,2 9,3
Article No.: 11 899 11 799



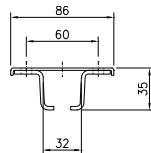
Track coupler

Material: Acid proof steel SS2343
Weight, kg: 0,28
Article No.: 11 809



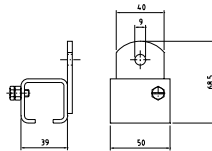
Support bracket with square nuts

Material: Acid proof steel SS2343
Weight, kg: 0,24
Article No.: 11 819



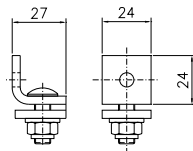
Support bracket for ceiling mounting

Material: Acid proof steel SS2343
Weight, kg: 0,16
Article No.: 11 826



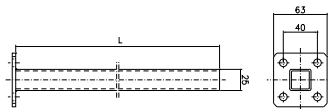
Support bracket for wall mounting

Material: Acid proof steel SS2343
Weight, kg: 0,20
Article No.: 11 836



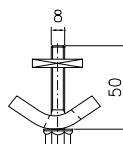
End stop

Material: Acid proof steel SS2343
Weight, kg: 0,13
Article No.: 11 840



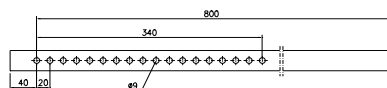
Towing arm

Material: Acid proof steel SS2343
Length, mm: 400
Weight, kg: 0,6
Article No.: 11 706



Girder clips (two for each support arm)

Material: Acid proof steel SS2343
Weight, kg: 0,15
Article No.: 11 738



Support arm

Material: Acid proof steel SS2343
Length, mm: 800
Weight, kg: 1,25
Article No.: 11 722



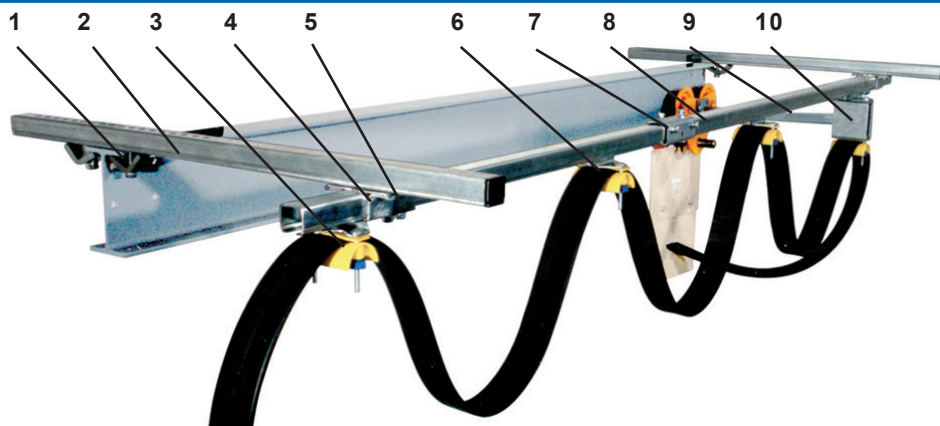
CABLE TROLLEYS, LONG TROLLEY

for C-rail 30x32 mm

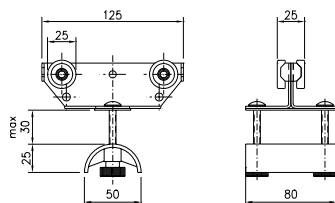
Flat cable



Sheet 11-33 2016



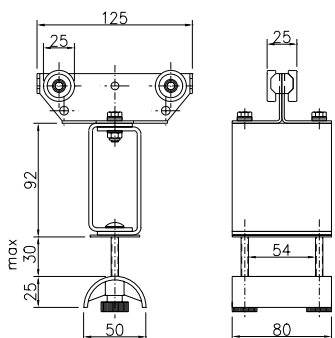
1. Girder clips
2. Support arm
3. End clamp
4. Support bracket
5. End stop
6. Cable trolley
7. Track coupler
8. C-rail
9. Towing arm
10. Towing trolley



Cable trolley flatcable, long version

Material: Galvanized steel body
Wheel with dustproof bearings
Polyamide Cable clamp

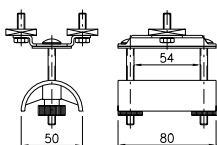
Cable load, kg: 20
Weight, kg: 0,36
Article No.: 11 314



Towing trolley, long version

Material: Galvanized steel body and towing box
Wheel with dustproof bearings
Polyamide Cable clamp

Cable load, kg: 20
Weight, kg: 0,6
Article No.: 11 767

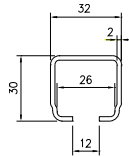


End clamp

Material: Polyamide, Galvanized steel

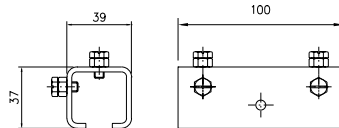
Weight, kg: 0,2
Article No.: 11 780





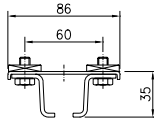
C-rail

Material: Galvanized steel
 Length, mm: 4000 6000
 Weight, kg: 6,2 9,3
 Article No.: 11 900 11 801



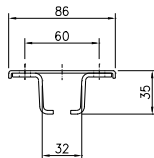
Track coupler

Material: Galvanized steel
 Weight, kg: 0,28
 Best. nr: 11 810



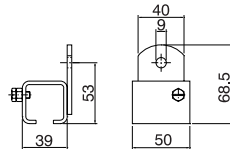
Support bracket with square nuts

Material: Galvanized steel
 Weight, kg: 0,24
 Article No.: 11 820



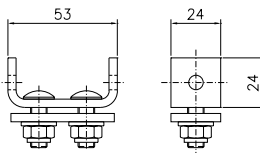
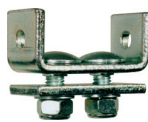
Support bracket for ceiling mounting

Material: Galvanized steel
 Weight, kg: 0,16
 Article No.: 11 825



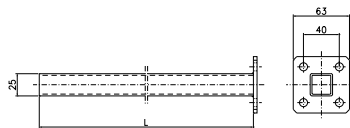
Support bracket for wall mounting

Material: Galvanized steel
 Weight, kg: 0,20
 Article No.: 11 830



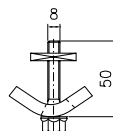
End stop

Material: Galvanized steel
 Weight, kg: 0,13
 Article No.: 11 841



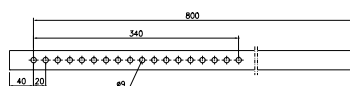
Towing arm

Material: Galvanized steel
 Length, mm: 400 630
 Weight, kg: 0,6 0,8
 Article No.: 11 701 11 702



Girder clips 2 for each support arm

Material: Galvanized steel
 Weight, kg: 0,15
 Article No.: 11 737



Support arm

Material: Galvanized steel
 Length, mm: 800
 Weight, kg: 1,25
 Article No.: 11 723

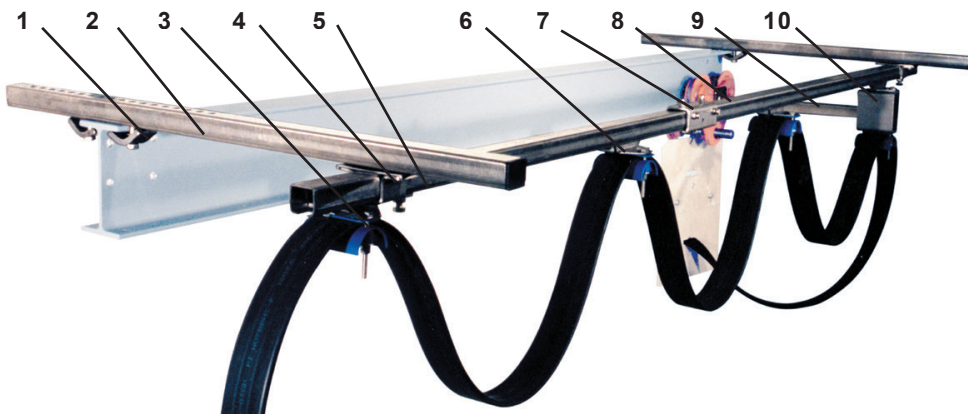
CABLE TROLLEYS, LONG TROLLEY

Acid proof, Stainless steel for C-rail 30x32 mm

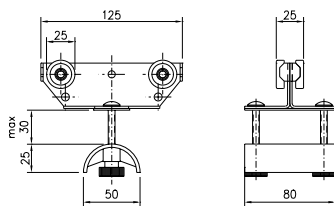
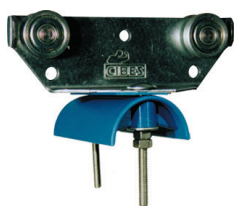
Flat cable



Sheet 11-33S 2016



1. Girder clips
2. Support arm
3. End clamp
4. Support bracket
5. End stop
6. Cable trolley
7. Track coupler
8. C-rail
9. Towing arm
10. Towing trolley

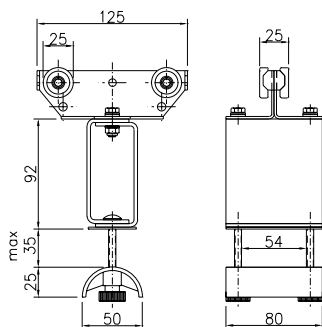


Cable trolley flatcable

Material: Acid proof steel SS 2343 (body)
Stainless & dust-proof bearings
Polyamide (cable clamp)
Acid proof steel A4 (Nuts & bolts)

Cable load, kg: 20
Weight, kg: 0,36
L, mm: 125
S, mm: 35

Article No.: 11 315

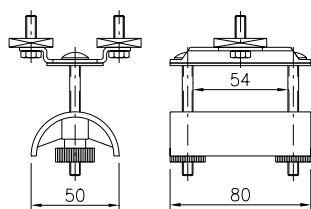
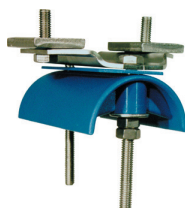


Towing trolley flatcable

Material: Acid proof steel SS 2343 (body)
Stainless & dust-proof bearings
Polyamide (cable clamp)
Acid proof steel A4 (Nuts & bolts)

Cable load, kg: 20
Weight, kg: 0,6

Article No.: 11 769

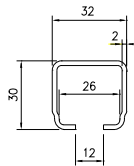


End clamp flatcable

Material: Acid proof steel SS 2343 (body)
Polyamide (cable clamp)
Acid proof steel A4 (Nuts & bolts)

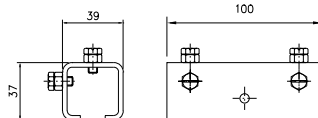
Weight, kg: 0,2

Article No.: 11 782



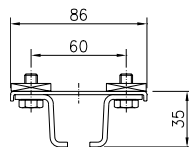
C-rail

Material: Acid proof steel SS2343
Length, mm: 4000 6000
Weight, kg: 6,2 9,3
Article No.: **11 899** **11 799**



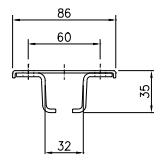
Track coupler

Material: Acid proof steel SS2343
Weight, kg: 0,28
Article No.: **11 809**



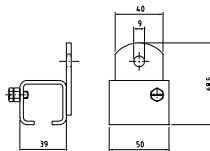
Support bracket with square nuts

Material: Acid proof steel SS2343
Weight, kg: 0,24
Article No.: **11 819**



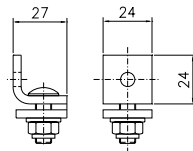
Support bracket for ceiling mounting

Material: Acid proof steel SS2343
Weight, kg: 0,16
Article No.: **11 826**



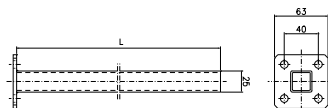
Support bracket for wall mounting

Material: Acid proof steel SS2343
Weight, kg: 0,20
Article No.: **11 836**



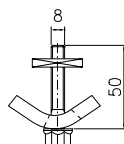
End stop

Material: Acid proof steel SS2343
Weight, kg: 0,13
Article No.: **11 840**



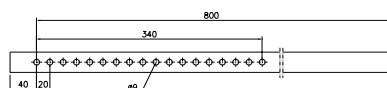
Towing arm

Material: Acid proof steel SS2343
Length, mm: 400
Weight, kg: 0,6
Article No.: **11 706**



Girder clips (two for each support arm)

Material: Acid proof steel SS2343
Weight, kg: 0,15
Article No.: **11 738**



Support arm

Material: Acid proof steel SS2343
Length, mm: 800
Weight, kg: 1,25
Article No.: **11 722**



CABLE TROLLEYS, LONG TROLLEY

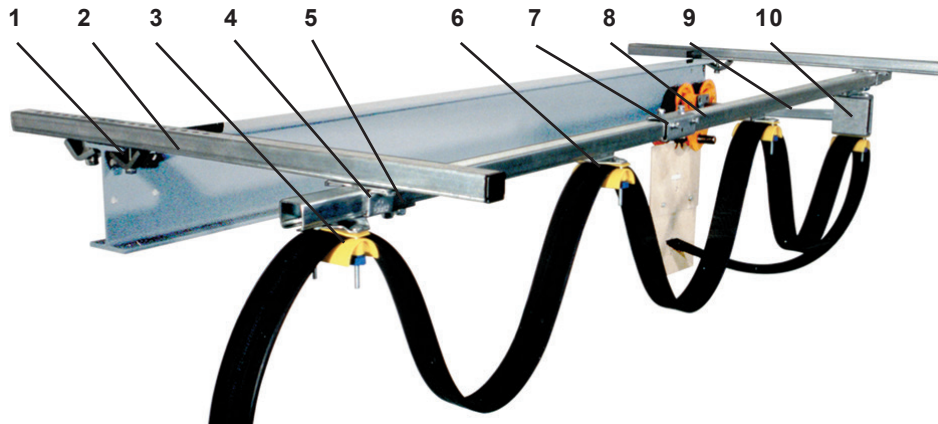
for C-rail 30x32 mm

Flat cable

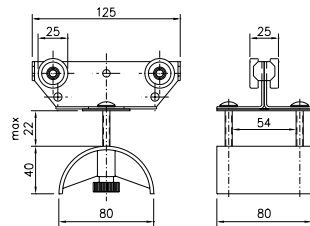
(Clamp with longer bending radius)



Sheet 11-34 2016



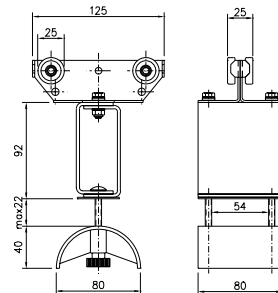
1. Girder clips
2. Support arm
3. End clamp
4. Support bracket
5. End stop
6. Cable trolley
7. Track coupler
8. C-rail
9. Towing arm
10. Towing trolley



Cable trolley flatcable, long version

Material: Galvanized steel body
Wheel with dustproof bearings
Polyamide Cable clamp

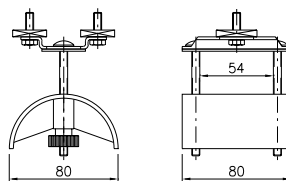
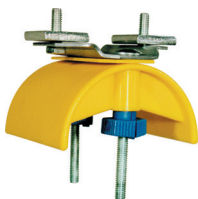
Cable load, kg: 20
Weight, kg: 0,39
Article No.: 11 313



Towing trolley

Material: Galvanized steel body and towing box
Wheel with dustproof bearings
Polyamide Cable clamp

Cable load, kg: 20
Weight, kg: 0,65
Article No.: 11 768

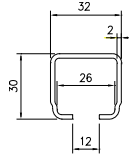


End clamp

Material: Polyamide, Galvanized steel

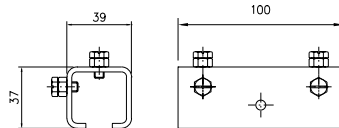
Weight, kg: 0,22
Article No.: 11 781





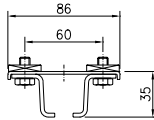
C-rail

Material: Galvanized steel
 Length, mm: 4000 6000
 Weight, kg: 6,2 9,3
 Article No.: 11 900 11 801



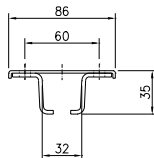
Track coupler

Material: Galvanized steel
 Vi kt, kg: 0,28
 Best. nr: 11 810



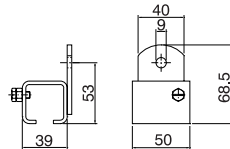
Support bracket with square nuts

Material: Galvanized steel
 Weight, kg: 0,24
 Article No.: 11 820



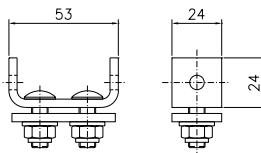
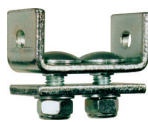
Support bracket for ceiling mounting

Material: Galvanized steel
 Weight, kg: 0,16
 Article No.: 11 825



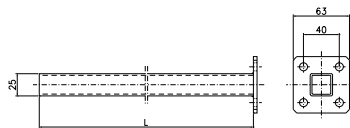
Support bracket for wall mounting

Material: Galvanized steel
 Weight, kg: 0,20
 Article No.: 11 830



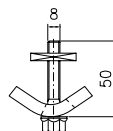
End stop

Material: Galvanized steel
 Weight, kg: 0,13
 Article No.: 11 841



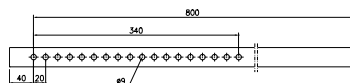
Towing arm

Material: Galvanized steel
 Length, mm: 400 630
 Weight, kg: 0,6 0,8
 Article No.: 11 701 11 702



Girder clips 2 for each support arm

Material: Galvanized steel
 Weight, kg: 0,15
 Article No.: 11 737



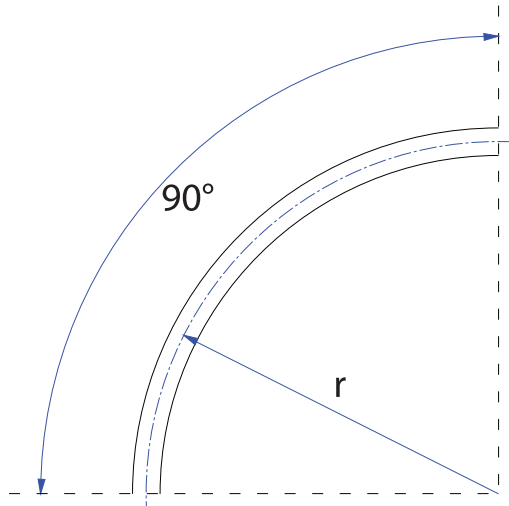
Support arm

Material: Galvanized steel
 Length, mm: 800
 Weight, kg: 1,25
 Article No.: 11 723

CURVES

C-rail 30x32 mm.

C-rail 30x32 mm

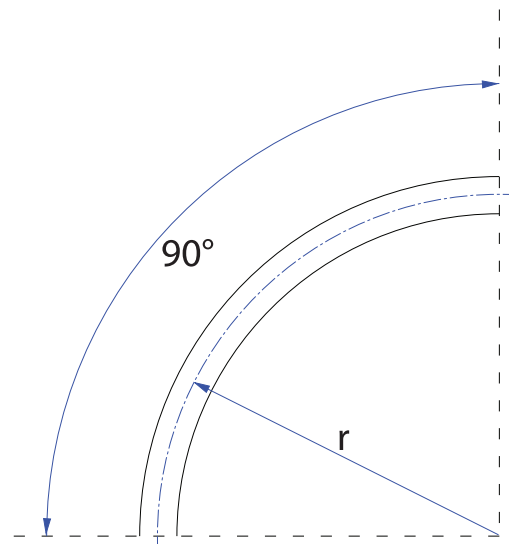


Article No.	Radius, mm	Curvelength, mm	Max. trolley-distance, mm	Max. trolley-Length, mm	Weight, kg
11 910	1000	1570	700	160	2,45
11 912	1200	1885	840	160	2,95
11 914	1400	2200	980	200	3,45
11 916	1600	2510	1120	200	3,90
11 918	1800	2830	1260	280	4,40
11 920	2000	3140	1400	280	4,90
11 922	2200	3455	1540	280	5,40
11 924	2400	3770	1680	320	5,90
11 926	2600	4080	1820	320	6,40
11 928	2800	4400	1960	320	6,90
11 930	3000	4710	2100	320	7,35
11 932	3200	5025	2240	320	7,85
11 934	3400	5340	2380	320	8,35
11 936	3600	5650	2520	320	9,10
11 938	3800	5970	2660	320	9,60
11 940	4000	6280	2800	320	10,10
11 942	4200	6595	2940	320	10,60
11 944	4400	6910	3080	320	11,10
11 946	4600	7220	3220	320	11,60
11 948	4800	7540	3360	320	12,10
11 950	5000	7850	3500	320	12,55

Curves with a radius greater than 3400 mm. are delivered in 2 parts, one extra Track coupler 11810 should be ordered.

Material: Galvanized steel.

C-rail 40x40 mm



Article No.	Radius, mm	Curvelength, mm	Max. trolley-distance, mm	Max. trolley-Length, mm	Weight, kg
11 550	1000	1570	700	100	3,90
11 552	1200	1885	840	125	4,70
11 554	1400	2200	980	160	5,50
11 556	1600	2510	1120	160	6,30
11 558	1800	2830	1260	200	7,10
11 560	2000	3140	1400	200	7,90
11 562	2200	3455	1540	250	8,60
11 564	2400	3770	1680	250	9,40
11 566	2600	4080	1820	280	10,20
11 568	2800	4400	1960	320	11,00
11 570	3000	4710	2100	320	11,80
11 572	3200	5025	2240	360	12,60
11 574	3400	5340	2380	360	13,40
11 576	3600	5650	2520	400	14,00
11 578	3800	5970	2660	400	14,90
11 580	4000	6280	2800	450	15,70
11 582	4200	6595	2940	450	16,50
11 584	4400	6910	3080	450	17,30
11 586	4600	7220	3220	500	18,10
11 588	4800	7540	3360	500	18,90
11 590	5000	7850	3500	500	19,60

Curves with a radius greater than 3400 mm. are delivered in 2 parts, one extra Track coupler 11812 should be ordered.

Material: Galvanized steel.

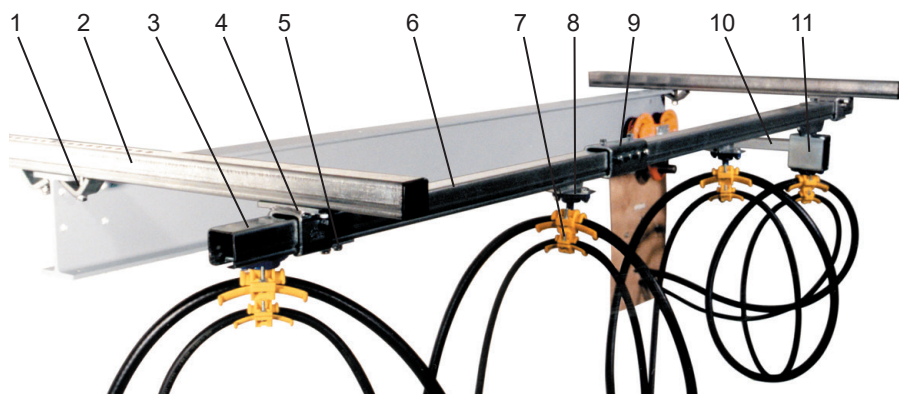
CABLE TROLLEYS

for C-rail 40x40 mm

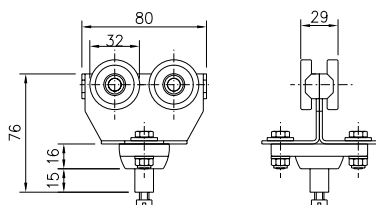
Round cable



Sheet 11-37 2016



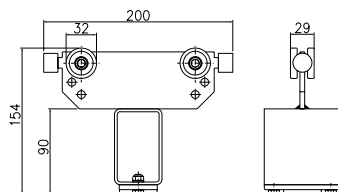
1. Girder clips
2. Support arm
3. End clamp
4. Support bracket
5. End stop
6. C-rail
7. Cable clamp
8. Cable trolley
9. Track coupler
10. Towing arm
11. Towing trolley



Cable trolley with 4 wheels for round cable

Material: Galvanized steel body
Wheel with dustproof bearings
Polyamide ball joint

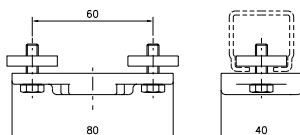
Cable load, kg: 32
Weight, kg: 0,52
Article No.: 11 502



Towing trolley

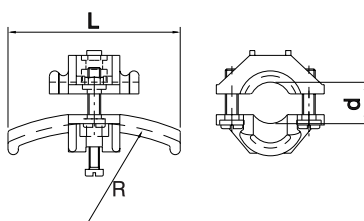
Material: Galvanized steel body and towing box
Wheel with dustproof bearings
Polyamide affixing plate

Cable load, kg: 32
Weight, kg: 1,0
Article No.: 11 757



End clamp

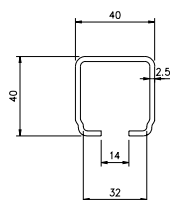
Material: Polyamide, Galvanized steel
Weight, kg: 0,15
Article No.: 11 779



Adjustable clamps for cable or hose

Material: Polyamide

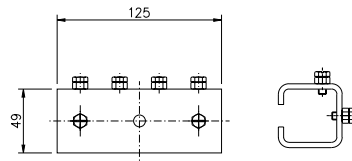
Diam., mm:	10 - 16	17 - 25	26 - 36
Radius, mm:	80	125	160
Length, mm:	70	100	140
Weight, kg:	0,04	0,06	0,12
Article No.:	11 050	11 051	11 052



C-rail

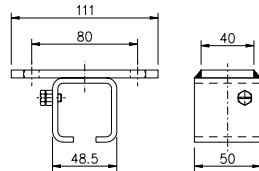
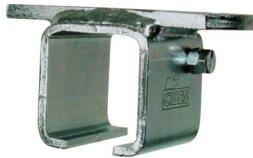
Material: Galvanized steel
Length, mm: 4000 6000
Weight, kg: 10,0 15,0
Article No.: 11 902 11 805





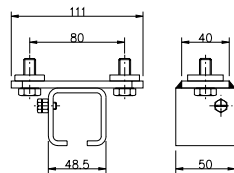
Track coupler

Material: Galvanized steel
Weight, kg: 0,61
Article No.: 11 812



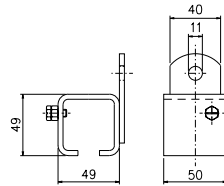
Support bracket for ceiling mounting

Material: Galvanized steel
Weight, kg: 0,36
Article No.: 11 827



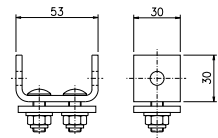
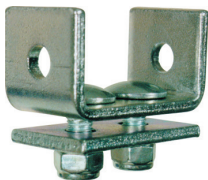
Support bracket with square nuts

Material: Galvanized steel
Weight, kg: 0,45
Article No.: 11 822



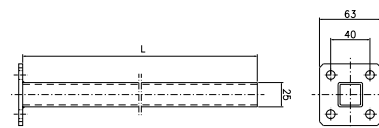
Support bracket for wall mounting

Material: Galvanized steel
Weight, kg: 0,32
Article No.: 11 832



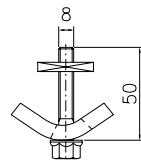
End stop

Material: Galvanized steel
Weight, kg: 0,16
Article No.: 11 842



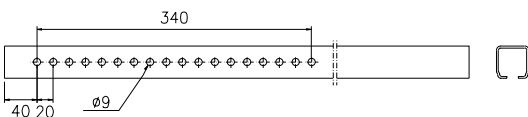
Towing arm

Material: Galvanized steel
Length, mm: 400 630
Weight, kg: 0,6 0,8
Article No.: 11 701 11 702



Girder clips 2 for each support arm

Material: Galvanized steel
Weight, kg: 0,15
Article No.: 11 737



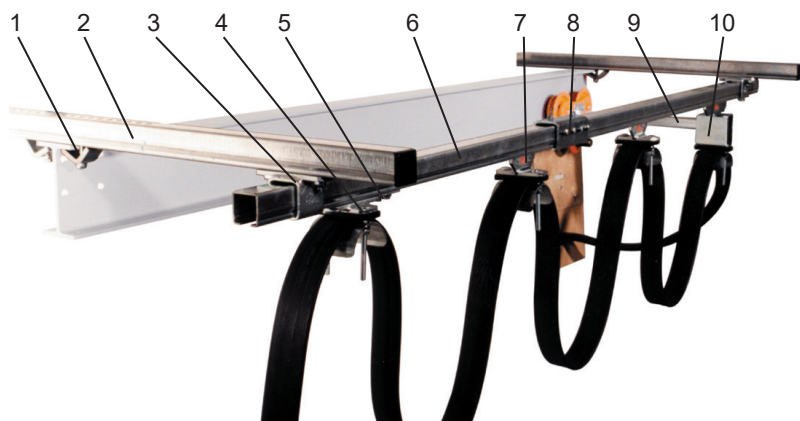
Support arm

Material: Galvanized steel
Length, mm: 800
Weight, kg: 2,0
Article No.: 11 727

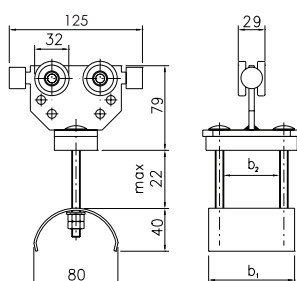
CABLE TROLLEYS for C-rail 40x40 mm Flat cable



Sheet 11-38 2016



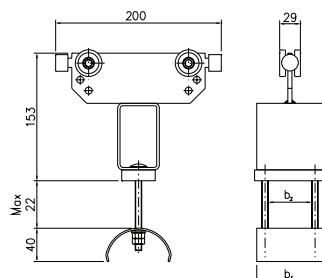
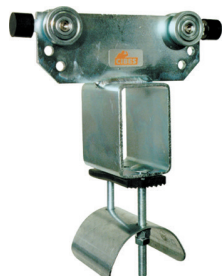
1. Girder clips
2. Support arm
3. Support bracket
4. End clamp
5. End stop
6. C-rail
7. Cable trolley
8. Track coupler
9. Towing arm
10. Towing trolley



Cable trolley with 4 wheels for flat cable

Material: Galvanized steel body
Wheel with dustproof bearings

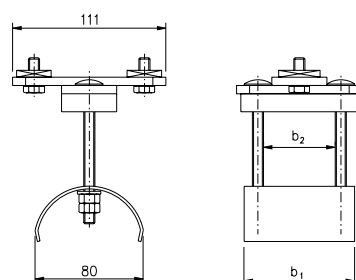
Article No.	b1 mm	b2 mm	Cable load, kg	Weight, kg
11 516	80	52	32	0,80
11 517	100	72	32	0,85
11 518	125	97	32	0,95
11 519	160	132	32	1,10



Towing trolley

Material: Galvanized steel body
Wheel with dustproof bearings

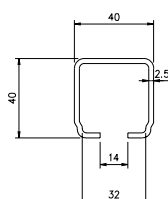
Article No.	b1 mm	b2 mm	Cable load, kg	Weight, kg
11 868	80	52	32	1,20
11 869	100	72	32	1,65
11 870	125	97	32	1,85
11 871	160	132	32	2,10



End clamp

Material: Galvanized steel

Article No.	b1 mm	b2 mm	Weight, kg
11 790	80	52	0,65
11 791	100	72	0,70
11 792	125	97	0,80
11 793	160	132	0,95

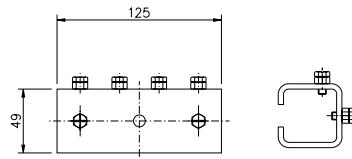


C-rail

Material: Galvanized steel

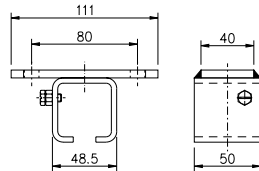
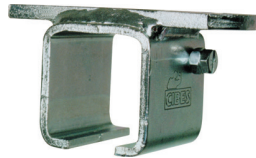
Length, mm:	4000	6000
Weight, kg:	10,0	15,0
Article No.:	11 902	11 805





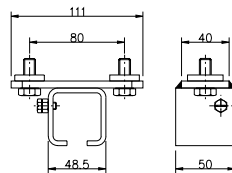
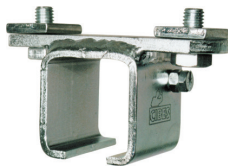
Track coupler

Material: Galvanized steel
Weight, kg: 0,61
Article No.: 11 812



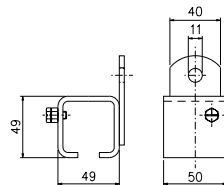
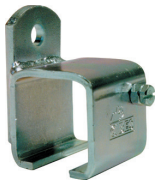
Support bracket for ceiling mounting

Material: Galvanized steel
Weight, kg: 0,36
Article No.: 11 827



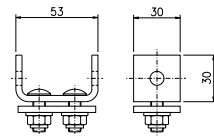
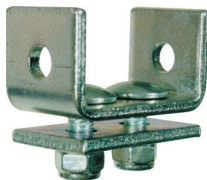
Support bracket with square nuts

Material: Galvanized steel
Weight, kg: 0,45
Article No.: 11 822



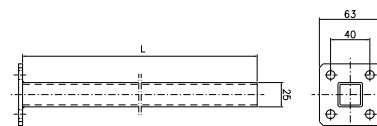
Support bracket for wall mounting

Material: Galvanized steel
Weight, kg: 0,32
Article No.: 11 832



End stop

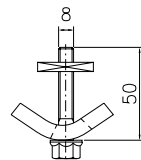
Material: Galvanized steel
Weight, kg: 0,16
Article No.: 11 842



Towing arm

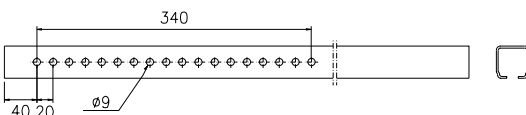
Material: Galvanized steel
Length, mm: 400
Weight, kg: 0,6
Article No.: 11 701

630
0,8
11 702



Girder clips 2 for each support arm

Material: Galvanized steel
Weight, kg: 0,15
Article No.: 11 737



Support arm

Material: Galvanized steel
Length, mm: 800
Weight, kg: 2,0
Article No.: 11 727

CABLE TROLLEYS

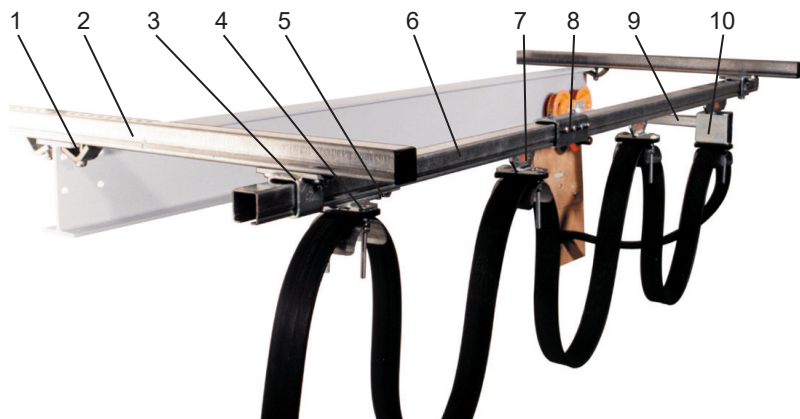
for C-rail 40x40 mm

Flat cable

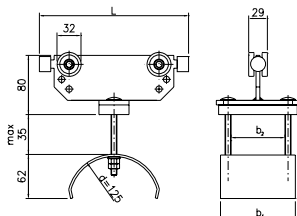
Long trolley



Sheet 11-39 2016



1. Girder clips
2. Support arm
3. Support bracket
4. End clamp
5. End stop
6. C-rail
7. Cable trolley
8. Track coupler
9. Towing arm
10. Towing trolley

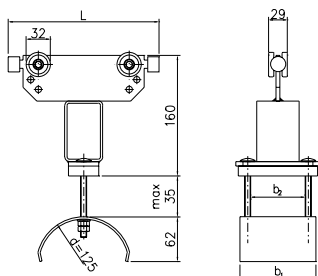


Cable trolley with 4 wheels for flat cable

Material: Galvanized steel body
Wheel with dustproof bearings

Trolleylength (L): 200 mm.

Article No.	b1 mm	b2 mm	Cable load, kg	Weight, kg
11 527	100	72	32	1,05
11 528	125	97	32	1,15
11 529	160	132	32	1,29

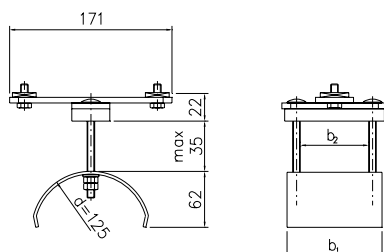


Towing trolley

Material: Galvanized steel body
Wheel with dustproof bearings

Trolleylength (L): 200 mm.

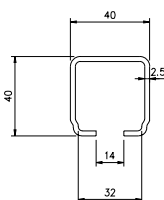
Article No.	b1 mm	b2 mm	Cable load, kg	Weight, kg
11 877	100	72	32	1,65
11 878	125	97	32	1,85
11 879	160	132	32	2,10



End clamp

Material: Galvanized steel

Article No.	b1 mm	b2 mm	Weight, kg
11 795	100	72	0,70
11 796	125	97	0,80
11 797	160	132	0,90

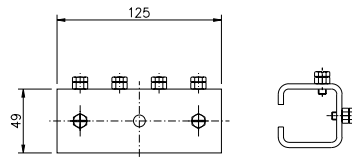


C-rail

Material: Galvanized steel

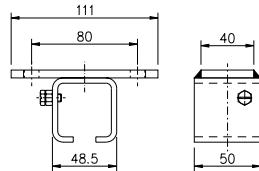
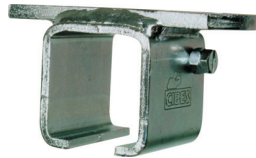
Length, mm:	4000	6000
Weight, kg:	10,0	15,0
Article No.:	11 902	11 805





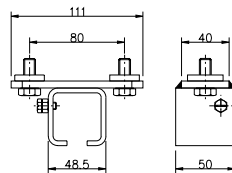
Track coupler

Material: Galvanized steel
Weight, kg: 0,61
Article No.: 11 812



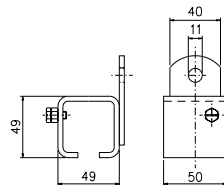
Support bracket for ceiling mounting

Material: Galvanized steel
Weight, kg: 0,36
Article No.: 11 827



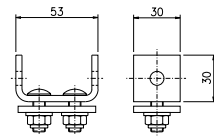
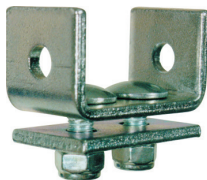
Support bracket with square nuts

Material: Galvanized steel
Weight, kg: 0,45
Article No.: 11 822



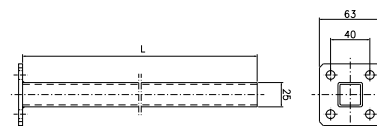
Support bracket for wall mounting

Material: Galvanized steel
Weight, kg: 0,32
Article No.: 11 832



End stop

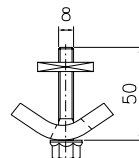
Material: Galvanized steel
Weight, kg: 0,16
Article No.: 11 842



Towing arm

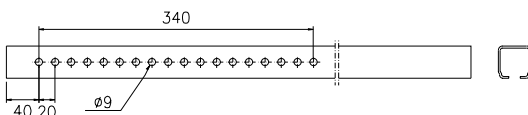
Material: Galvanized steel
Length, mm: 400
Weight, kg: 0,6
Article No.: 11 701

630
0,8
11 702



Girder clips 2 for each support arm

Material: Galvanized steel
Weight, kg: 0,15
Article No.: 11 737



Support arm

Material: Galvanized steel
Length, mm: 800
Weight, kg: 2,0
Article No.: 11 727

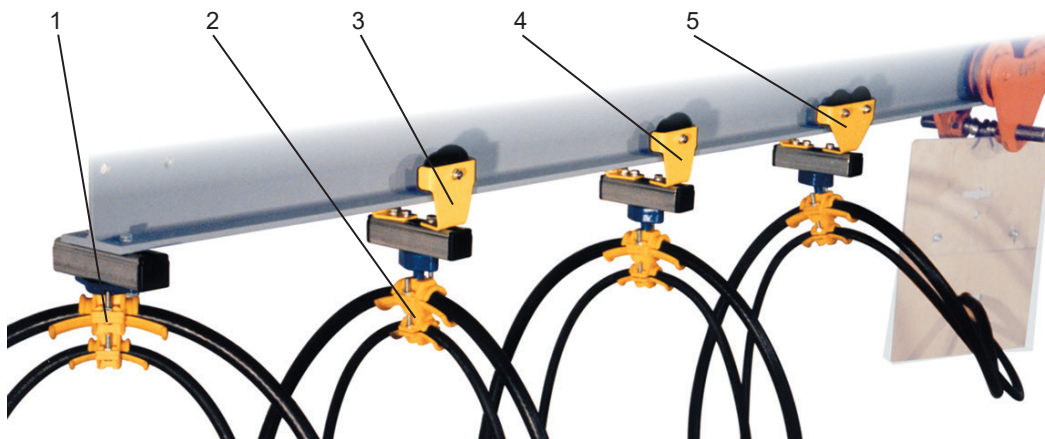
CABLE TROLLEYS

For I-beam

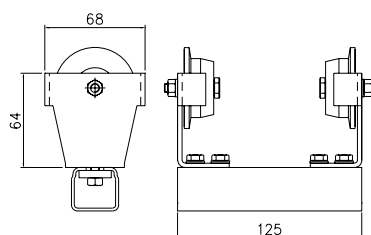
Roundcable



Sheet 11-40 2016



1. End clamp
2. Cable clamp
3. Cable trolley, 2-wheels
4. Cable trolley, 3-wheels
5. Cable trolley, 4-wheels

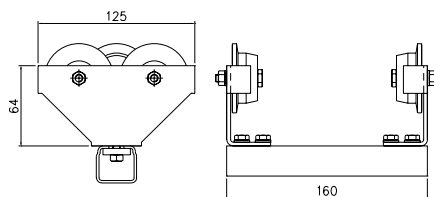


Trolley with 2 wheels

Material: Powder coated body
Polyamidewheels
Stainless steel axle
Galvanized c-rail

Cable load, kg: 10
Weight, kg: 0,50
Article No.: 11 125

Always include the I-beam dimension with your order.

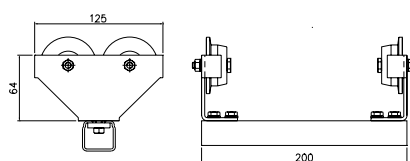


Trolley with 3 wheels

Material: Powder coated body
Polyamidewheels
Stainless steel axle
Galvanized c-rail

Cable load, kg: 10
Weight, kg: 0,60
Article No.: 11 126

Always include the I-beam dimension with your order.



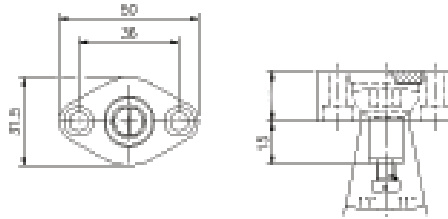
Trolley with 4 wheels

Material: Powder coated body
Polyamidewheels
Stainless steel axle
Galvanized c-rail

Cable load, kg: 20
Weight, kg : 0,70
Article No.: 11 127

Always include the I-beam dimension with your order.

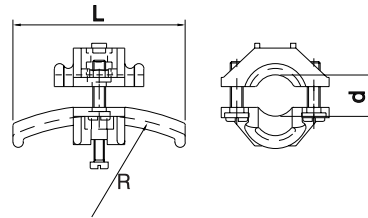




Ball joint

Material: Polyamide

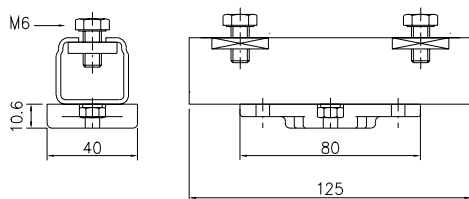
Weight, kg: 0,04
Article No.: 11 299



Adjustable clamp for cable or hose

Material: Polyamide

Diam., mm:	10-16	17-25	26-36
Radius, mm:	80	125	160
Length, mm:	70	100	140
Weight, kg:	0,04	0,06	0,12
Article No.:	11 050	11 051	11 052



End clamp with c-rail

Material: Galvanized c-rail
Polyamide assembly plate

Weight, kg: 0,15
Article No.: 11 732

Adjustable clamp for cable or hose

Article No.: 11 050-11 052 as above.

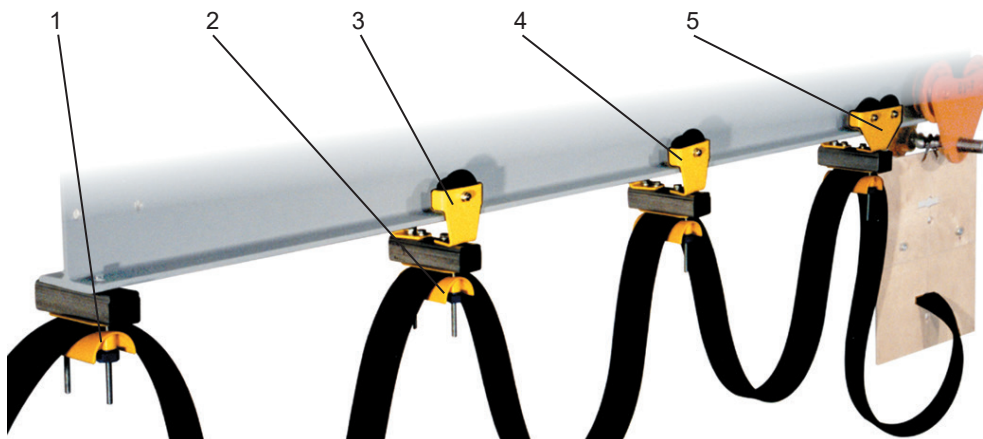
CABLE TROLLEYS

For I-beam

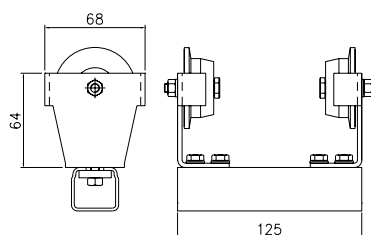
Flat cable



Sheet 11-42 2016



1. End clamp
2. Cable clamp
3. Cable trolley, 2-wheel
4. Cable trolley, 3-wheel
5. Cable trolley, 4-wheel

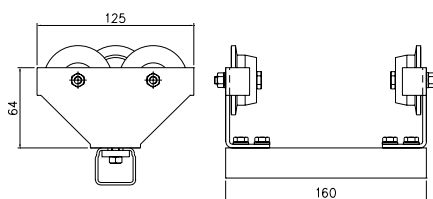


Trolley with 2 wheels

Material: Powder coated body
Polyamidewheels
Stainless steel axle
Galvanized c-rail

Cable load, kg: 10
Weight, kg: 0,50
Article No.: 11 125

Always include the I-beam dimension with your order.

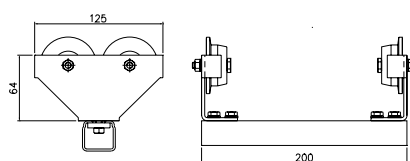


Trolley with 3 wheels

Material: Powder coated body
Polyamidewheels
Stainless steel axle
Galvanized c-rail

Cable load, kg: 10
Weight, kg: 0,60
Article No.: 11 126

Always include the I-beam dimension with your order.



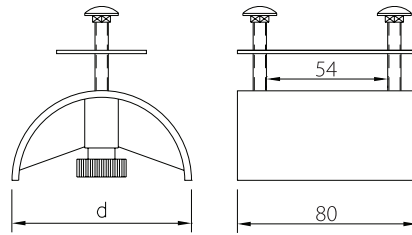
Trolley with 4 wheels

Material: Powder coated body
Polyamidewheels
Stainless steel axle
Galvanized c-rail

Cable load, kg: 20
Weight, kg : 0,70
Article No.: 11 127

Always include the I-beam dimension with your order.



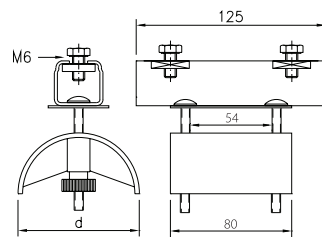


Cable clamps

Material: Polyamide

Article No.:	d	Weight,kg
11 130	50	0,10
11 131	80	0,12

Other sizes available on request.



End clamp with bar

Material: Galvanized C-rail
Polyamide clamp

Article No.:	d	Weight,kg
11 748	50	0,20
11 749	80	0,22

Other sizes available on request.