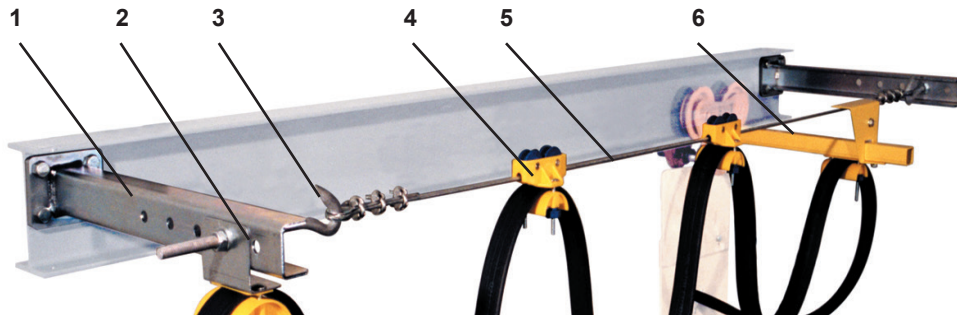


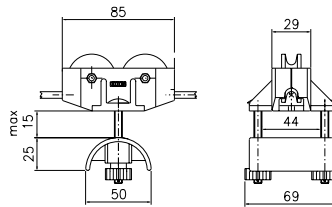
CABLE TROLLEYS for 6 mm. steel wire flat cable



Sheet 11-12 2016



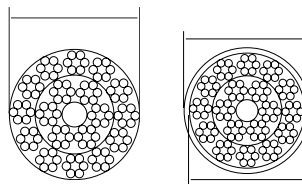
1. Tension bracket
2. Fixed plate cableclamp
3. Tension screw
4. Cable trolley with 2 wheels for flat cable
5. Steel wire, 6 mm.
6. Towing trolley



Cable trolley with 2 wheels for flat cable

Material: Polyamide wheels and clamp
Polyamide body
Steel axles

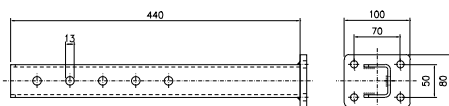
Cable load, kg: 6
Weight, kg: 0,10
Article No.: 11 236



Steel wire (galvanized)

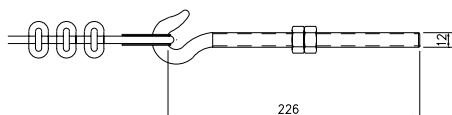
Material: Wire PVC-covered wire

Weight, kg: 0,12 0,10
Article No.: 11 740 11 741



Tension bracket

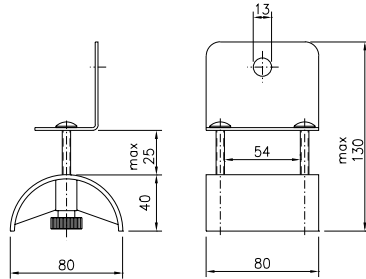
Material: Galvanized steel
Weight, kg: 2,1
Article No.: 11 720



Tension screw

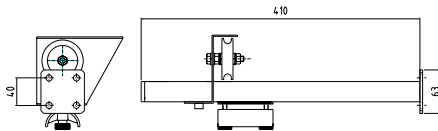
Material: Galvanized steel
Weight, kg: 0,25
Article No.: 11 735





Mounting plate for end clamp

Material: Galvanized steel/Polyamide
Weight, kg: 0,22
Article No.: 11 733



Towing trolley

Material: Powder coated body and arm
Polyamide wheel
Polyamide affixing plate
Steel axle
Weight, kg: 1,22
Article No.: 11 708

