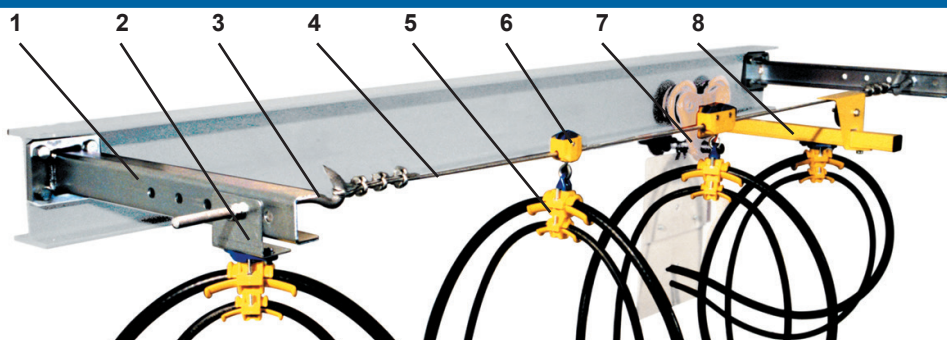


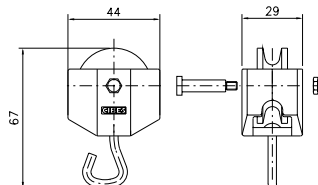
# CABLE TROLLEYS for 6 mm. steel wire Roundcable



Sheet 11-10 2016



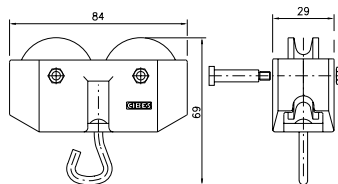
1. Tension bracket
2. Fixed plate cableclamp
3. Tension screw
4. Steel wire 6 mm.
5. Cableclamp, adjustable
6. Cable trolley, one wheel
7. Cable trolley, two wheels
8. Towing trolley



### Cable trolley with 1 wheel for round cable

Material: Polyamide wheel  
Polyamide body  
Steel axle

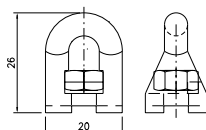
Cable load, kg: 3  
Weight, kg: 0,035  
Article No.: 11 135



### Cable trolley with 2 wheels for round cable

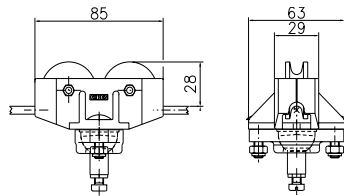
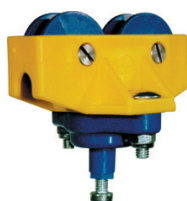
Material: Polyamide wheel  
Polyamide body  
Steel axle

Cable load, kg: 6  
Weight, kg: 0,06  
Article No.: 11 235



### Connecting eye for cable clamp 11 050-052

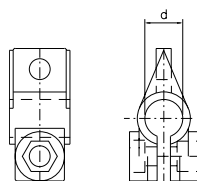
Material: Polyamide  
Weight, kg: 0,010  
Article No.: 11 055



### Cable trolley with 2 wheels and ball joint

Material: Polyamide wheel & ball joint  
Polyamide body  
Steel axle

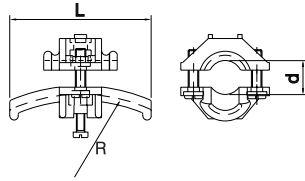
Cable load, kg: 6  
Weight, kg: 0,10  
Article No.: 11 234



### Cable collars

Material: Polyamide  
Weight, kg: 0,008 - 0,014  
Article No.      Ø mm.

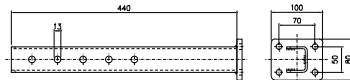
11 010	10	11 016	16
11 011	11	11 018	18
11 012	12,5	11 020	20
11 014	14	11 022	22



**Adjustable clamps for cable or hose**

Material: Polyamide

Diam., mm:	10 - 16	17 - 25	26 - 36
Radius, mm:	80	125	160
Length, mm:	70	100	140
Weight, kg:	0,04	0,06	0,12
Article No.:	11 050	11 051	11 052

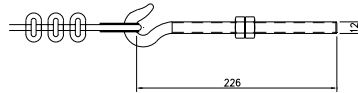


**Tension bracket**

Material: Galvanized steel

Weight, kg: 2,1

Article No.: 11 720

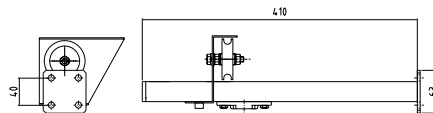


**Tension screw**

Material: Galvanized steel

Weight, kg: 0,25

Article No.: 11 735

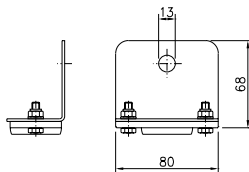
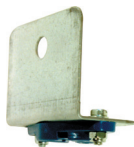


**Towing trolley**

Material: Powder coated body and arm  
Polyamide wheel  
Polyamide affixing plate  
Steel axle

Weight, kg: 1,18

Article No.: 11 707

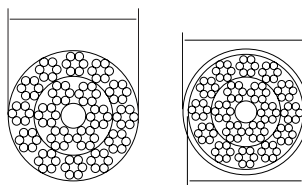


**Mounting plate for end clamp**

Material: Galvanized steel/Polyamide

Weight, kg: 0,17

Article No.: 11 731



**Steel wire (galvanized)**

Material: Wire PVC-covered wire

Weight, kg: 0,12 0,10

Article No.: 11 740 11 741