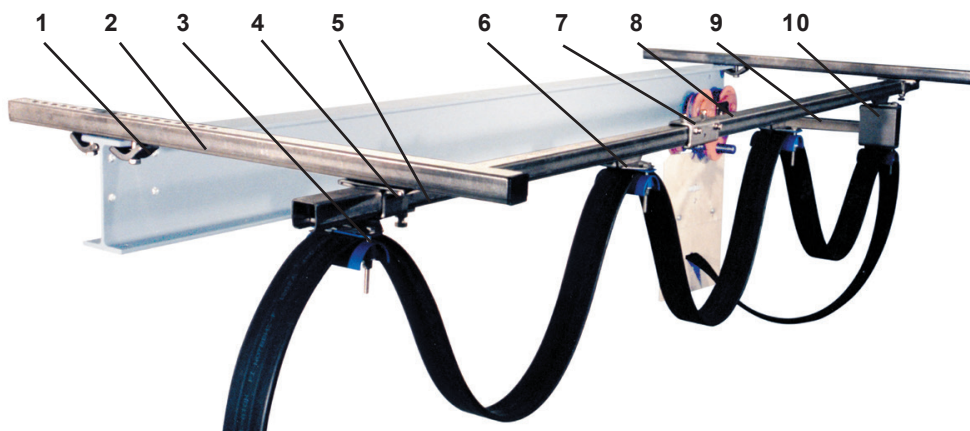


# CABLE TROLLEYS

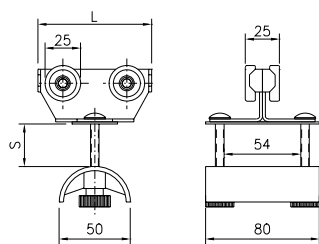
## Acid proof, Stainless steel for C-rail, 30x32 mm. Flat cable



Sheet 11-32S 2011



1. Girder clips
2. Support arm
3. End clamp
4. Support bracket
5. End stop
6. Cable trolley
7. Track coupler
8. C-rail
9. Towing arm
10. Towing trolley

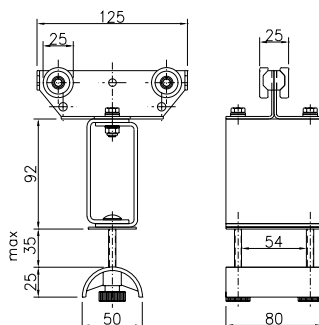


### Cable trolley flatcable

Material: Acid proof steel SS 2343 (body)  
Stainless & dust-proof bearings  
Polyamide (cable clamp)  
Acid proof steel A4 (Nuts & bolts)

Cable load, kg: 20  
Weight, kg: 0,28                      0,36  
L, mm: 80                              125  
S, mm: 15                              35

Article No.: 11 311                      11 315

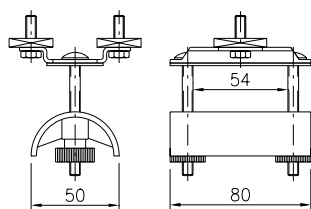
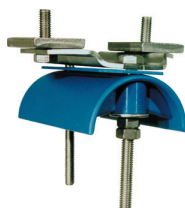


### Towing trolley flatcable

Material: Acid proof steel SS 2343 (body)  
Stainless & dust-proof bearings  
Polyamide (cable clamp)  
Acid proof steel A4 (Nuts & bolts)

Cable load, kg: 20  
Weight, kg: 0,6

Article No.: 11 769



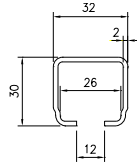
### End clamp flatcable

Material: Acid proof steel SS 2343 (body)  
Polyamide (cable clamp)  
Acid proof steel A4 (Nuts & bolts)

Weight, kg: 0,2

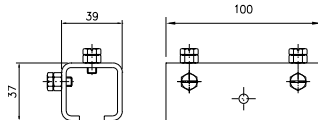
Article No.: 11 782





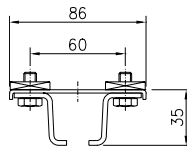
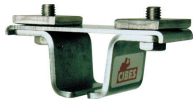
**C-rail**

Material: Acid proof steel SS2343  
Length, mm: 4000 6000  
Weight, kg: 6,2 9,3  
Article No.: 11 899 11 799



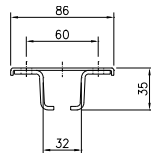
**Track coupler**

Material: Acid proof steel SS2343  
Weight, kg: 0,28  
Article No.: 11 809



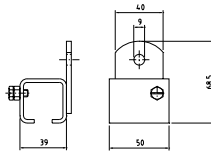
**Support bracket with square nuts**

Material: Acid proof steel SS2343  
Weight, kg: 0,24  
Article No.: 11 819



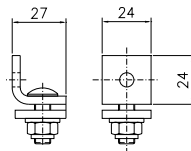
**Support bracket for ceiling mounting**

Material: Acid proof steel SS2343  
Weight, kg: 0,16  
Article No.: 11 826



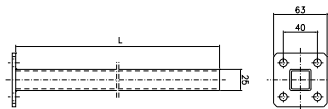
**Support bracket for wall mounting**

Material: Acid proof steel SS2343  
Weight, kg: 0,20  
Article No.: 11 836



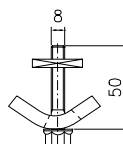
**End stop**

Material: Acid proof steel SS2343  
Weight, kg: 0,13  
Article No.: 11 840



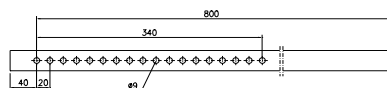
**Towing arm**

Material: Acid proof steel SS2343  
Length, mm: 400  
Weight, kg: 0,6  
Article No.: 11 706



**Girder clips (two for each support arm)**

Material: Acid proof steel SS2343  
Weight, kg: 0,15  
Article No.: 11 738



**Support arm**

Material: Acid proof steel SS2343  
Length, mm: 800  
Weight, kg: 1,25  
Article No.: 11 722

