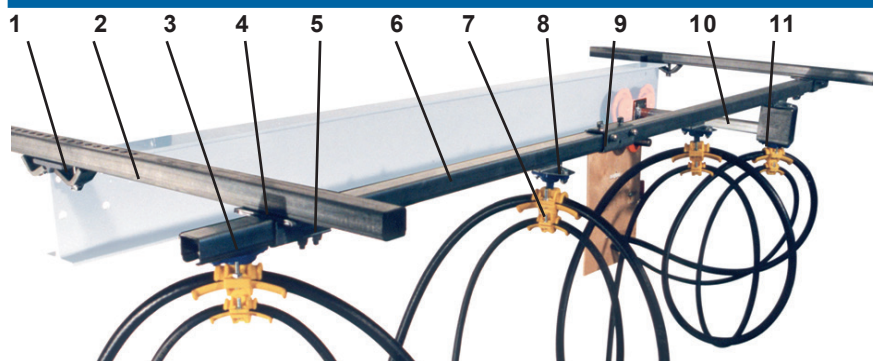


# CABLE TROLLEYS

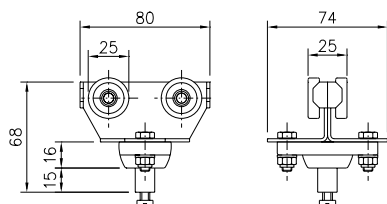
## Acid proof, Stainless steel for C-rail, 30x32 mm. Round cable



Sheet 11-30S 2016



1. Girder clips
2. Support arm
3. End clamp
4. Support bracket
5. End stop
6. C-rail
7. Cable clamp
8. Cable trolley
9. Track coupler
10. Towing arm
11. Towing trolley



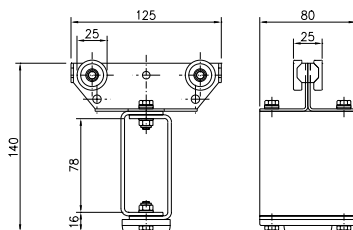
### Cable trolley with 4 wheels for round cable

Material: Acid proof steel SS 2343 (body)  
Stainless & dustproof bearings  
polyamide (ball joint)  
Acid proof steel A4 (nuts & bolts)

Cable load, kg: 20

Weight, kg: 0,26

Article no.: 11 653



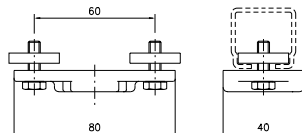
### Towing trolley

Material: Acid proof steel SS 2343 (body)  
Stainless & dustproof bearings  
polyamide (affixing plate)  
Acid proof steel A4 (nuts & bolts)

Cable load, kg: 20

Weight, kg: 0,57

Article no.: 11 654

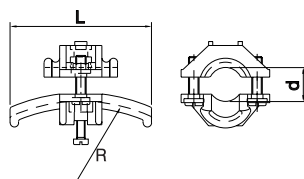


### Affixing plate for cable clamp

Material: Polyamide  
Acid proof steel A4 (nuts & bolts)

Weight, kg: 0,09

Article no.: 11 655



### Adjustable clamp for cable or hose

Material: Polyamide  
Acid proof steel A4 (nuts & bolts)

Diam., mm: 10 - 16    17 - 25    26 - 36

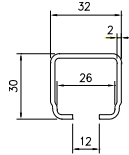
Radius, mm: 80    125    160

Length, mm: 70    100    140

Weight, kg: 0,04    0,06    0,12

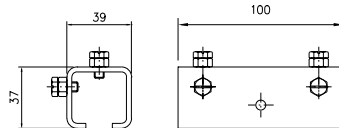
Article no.: 11 650    11 651    11 652





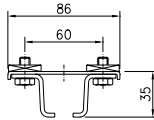
**C-rail**

Material: Acid proof steel SS 2343  
 Length, mm: 4000 6000  
 Weight, kg: 6,2 9,3  
 Article no.: 11 899 11 799



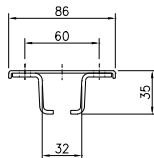
**Track coupler**

Material: Acid proof steel SS 2343  
 Weight, kg: 0,28  
 Article no.: 11 809



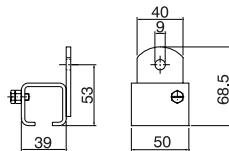
**Support bracket with square nuts**

Material: Acid proof steel SS 2343  
 Weight, kg: 0,24  
 Article no.: 11 819



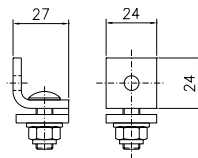
**Support bracket for ceiling mounting**

Material: Acid proof steel SS 2343  
 Weight, kg: 0,16  
 Article no.: 11 826



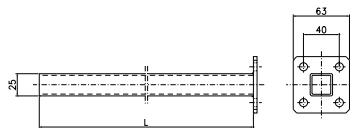
**Support bracket for wall mounting**

Material: Acid proof steel SS 2343  
 Weight, kg: 0,20  
 Article no.: 11 836



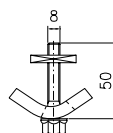
**End stop**

Material: Acid proof steel SS 2343  
 Weight, kg: 0,13  
 Article no.: 11 840



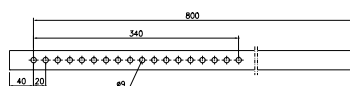
**Towing arm**

Material: Acid proof steel SS 2343  
 Length, mm: 400  
 Weight, kg: 0,6  
 Article no.: 11 706



**Girder clips 2 for each support arm**

Material: Acid proof steel SS 2343  
 Weight, kg: 0,15  
 Article no.: 11 738



**Support arm**

Material: Acid proof steel SS 2343  
 Length, mm: 800  
 Weight, kg: 1,25  
 Article no.: 11 722

