

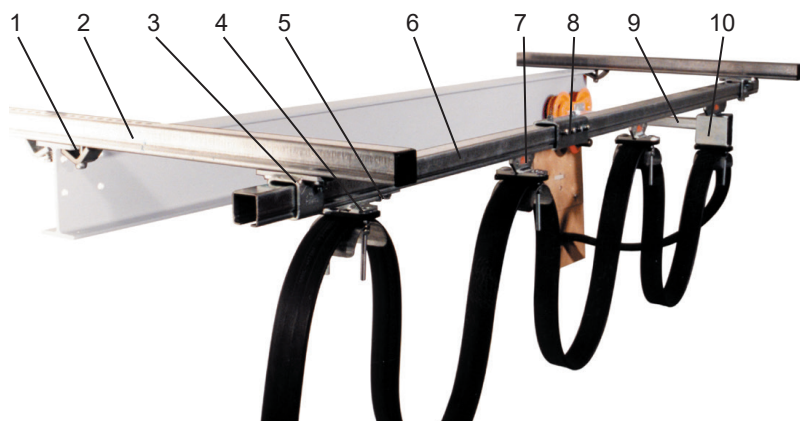
CABLE TROLLEYS

for C-rail 40x40 mm

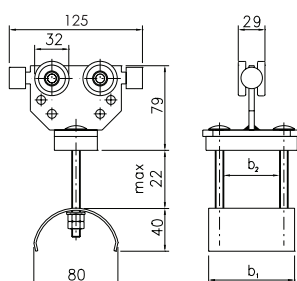
Flat cable



Sheet 11-38 2016



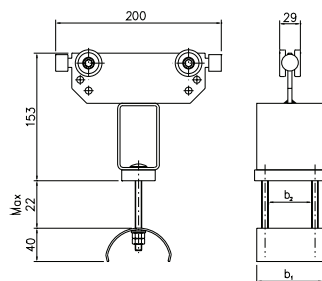
1. Girder clips
2. Support arm
3. Support bracket
4. End clamp
5. End stop
6. C-rail
7. Cable trolley
8. Track coupler
9. Towing arm
10. Towing trolley



Cable trolley with 4 wheels for flat cable

Material: Galvanized steel body
Wheel with dustproof bearings

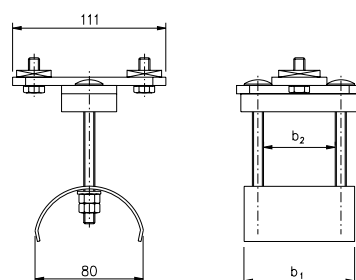
Article No.	b1 mm	b2 mm	Cable load, kg	Weight, kg
11 516	80	52	32	0,80
11 517	100	72	32	0,85
11 518	125	97	32	0,95
11 519	160	132	32	1,10



Towing trolley

Material: Galvanized steel body
Wheel with dustproof bearings

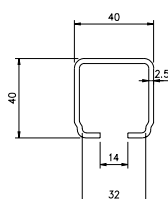
Article No.	b1 mm	b2 mm	Cable load, kg	Weight, kg
11 868	80	52	32	1,20
11 869	100	72	32	1,65
11 870	125	97	32	1,85
11 871	160	132	32	2,10



End clamp

Material: Galvanized steel

Article No.	b1 mm	b2 mm	Weight, kg
11 790	80	52	0,65
11 791	100	72	0,70
11 792	125	97	0,80
11 793	160	132	0,95

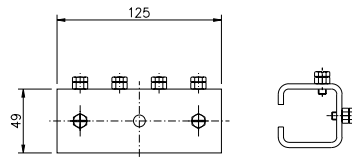


C-rail

Material: Galvanized steel

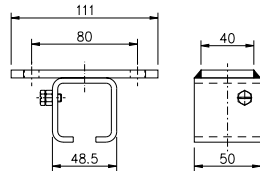
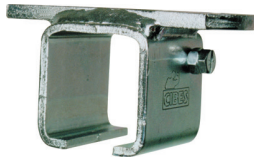
Length, mm:	4000	6000
Weight, kg:	10,0	15,0
Article No.:	11 902	11 805





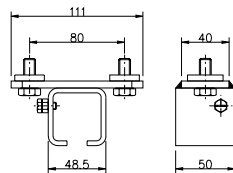
Track coupler

Material: Galvanized steel
Weight, kg: 0,61
Article No.: 11 812



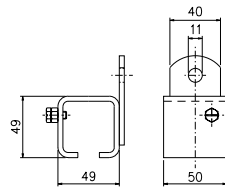
Support bracket for ceiling mounting

Material: Galvanized steel
Weight, kg: 0,36
Article No.: 11 827



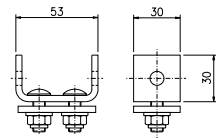
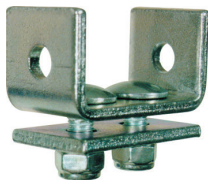
Support bracket with square nuts

Material: Galvanized steel
Weight, kg: 0,45
Article No.: 11 822



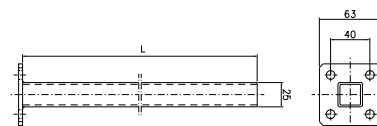
Support bracket for wall mounting

Material: Galvanized steel
Weight, kg: 0,32
Article No.: 11 832



End stop

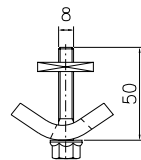
Material: Galvanized steel
Weight, kg: 0,16
Article No.: 11 842



Towing arm

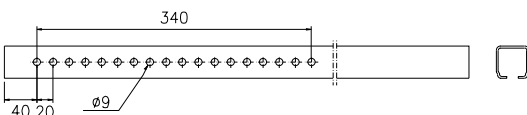
Material: Galvanized steel
Length, mm: 400
Weight, kg: 0,6
Article No.: 11 701

630
0,8
11 702



Girder clips 2 for each support arm

Material: Galvanized steel
Weight, kg: 0,15
Article No.: 11 737



Support arm

Material: Galvanized steel
Length, mm: 800
Weight, kg: 2,0
Article No.: 11 727