

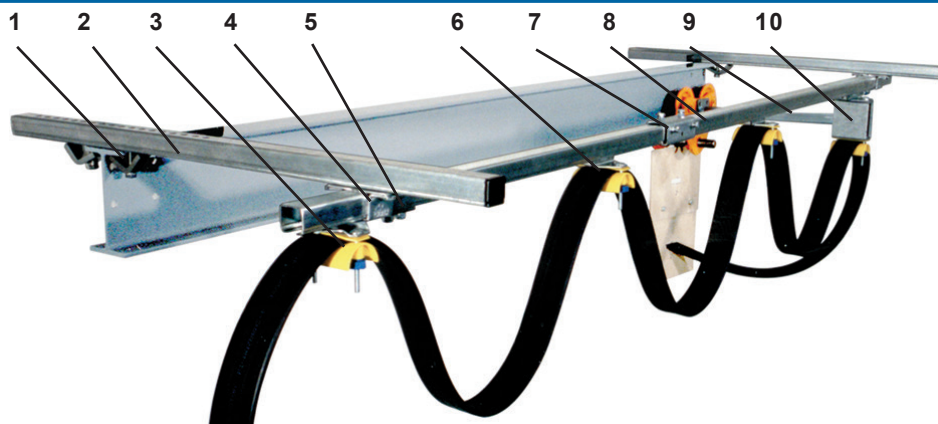
# CABLE TROLLEYS, LONG TROLLEY

## for C-rail 30x32 mm

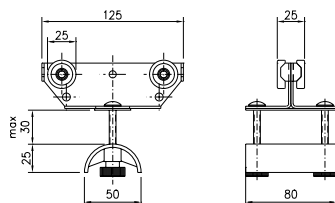
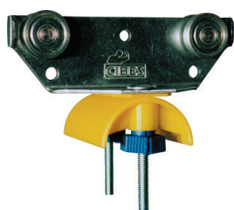
### Flat cable



Sheet 11-33 2016



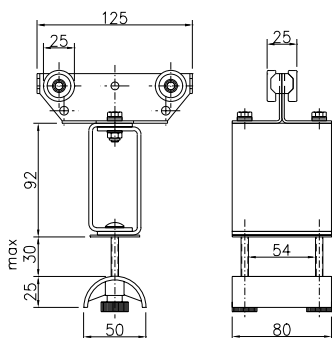
1. Girder clips
2. Support arm
3. End clamp
4. Support bracket
5. End stop
6. Cable trolley
7. Track coupler
8. C-rail
9. Towing arm
10. Towing trolley



#### Cable trolley flatcable, long version

Material: Galvanized steel body  
Wheel with dustproof bearings  
Polyamide Cable clamp

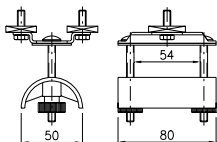
Cable load, kg: 20  
Weight, kg: 0,36  
Article No.: 11 314



#### Towing trolley, long version

Material: Galvanized steel body and towing box  
Wheel with dustproof bearings  
Polyamide Cable clamp

Cable load, kg: 20  
Weight, kg: 0,6  
Article No.: 11 767

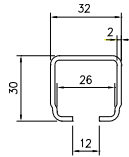


#### End clamp

Material: Polyamide, Galvanized steel

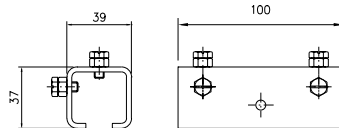
Weight, kg: 0,2  
Article No.: 11 780





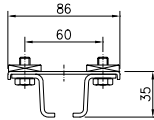
**C-rail**

Material: Galvanized steel  
 Length, mm: 4000                      6000  
 Weight, kg: 6,2                              9,3  
 Article No.: 11 900                      11 801



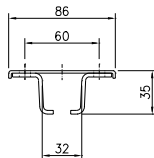
**Track coupler**

Material: Galvanized steel  
 Weight, kg: 0,28  
 Best. nr: 11 810



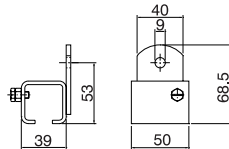
**Support bracket with square nuts**

Material: Galvanized steel  
 Weight, kg: 0,24  
 Article No.: 11 820



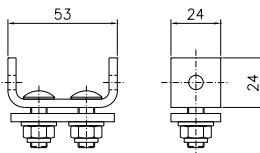
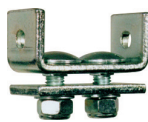
**Support bracket for ceiling mounting**

Material: Galvanized steel  
 Weight, kg: 0,16  
 Article No.: 11 825



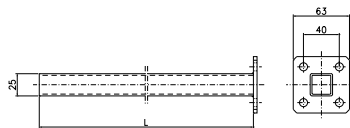
**Support bracket for wall mounting**

Material: Galvanized steel  
 Weight, kg: 0,20  
 Article No.: 11 830



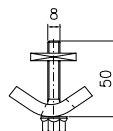
**End stop**

Material: Galvanized steel  
 Weight, kg: 0,13  
 Article No.: 11 841



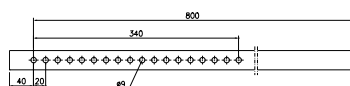
**Towing arm**

Material: Galvanized steel  
 Length, mm: 400                      630  
 Weight, kg: 0,6                              0,8  
 Article No.: 11 701                      11 702



**Girder clips 2 for each support arm**

Material: Galvanized steel  
 Weight, kg: 0,15  
 Article No.: 11 737



**Support arm**

Material: Galvanized steel  
 Length, mm: 800  
 Weight, kg: 1,25  
 Article No.: 11 723